

Problems and Status of Muslim Graveyards in Delhi



a report



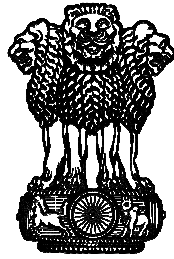
सत्यमेव जयते

**DELHI MINORITIES
COMMISSION**

GOVERNMENT OF NCT OF DELHI

PROBLEMS AND STATUS OF MUSLIM GRAVEYARDS IN DELHI

A REPORT



सत्यमेव जयते

DELHI MINORITIES COMMISSION

Government of NCT of Delhi

C- Block, First Floor, Vikas Bhawan, I.P. Estate

New Delhi 110002

Cover photo: A scene from Batla House graveyard

*Study conducted for
Delhi Minorities Commission
By*

HUMAN DEVELOPMENT SOCIETY
27-0, Pocket 2, MIG Complex,
Mayur Vihar, Phase 3, Delhi- 110096
Telephone: 011-22621867, 09971222966
Email: hdsociety@yahoo.com, info@hdsindia.org
Website: www.hdsindia.org

FOREWORD

Delhi Minorities Commission is pleased to publish this study on Muslim graveyards in the NCT of Delhi. This study was commissioned by the previous Commission headed by Shri Qamar Ahmad but could not be finalised and published during its tenure. The new Commission, which took over on 20 July, 2017, found this study among the pending work. We took it up with due diligence and urgency. After going through the draft, we called a meeting with Human Development Society's director and researcher. Now it is being published with some changes and addition of some information and data.

This study is an eye-opener. It tells us that a majority of Muslim graveyards registered with Delhi Waqf Board (DWB) and other agencies has practically disappeared over the years. Both public and government agencies have occupied or encroached upon graveyards, while new land is not being earmarked for new qabristans in town-planning schemes. The study has found that the remaining space in the existing qabristans is hardly enough for two more years.

DMC will approach Govt. of NCT of Delhi and its agencies, especially Delhi Waqf Board and Delhi Development Authority, to quickly solve this grave problem before it is too late. We also thank media which has shown interest and highlighted this problem recently after it came to know that DMC has prepared a study on this issue.

Dr. Zafarul-Islam Khan
Chairman, DMC
Kartar Singh Kochhar
Member, DMC
Anastasia Gill
Member, DMC

CONTENTS

Preface	7
Acronyms and Abbreviations	8
Executive Summary	9
Chapter 1 Introduction	13
1.1. Objectives	13
1.2. Geographic Coverage	14
1.3. Methodology	14
Chapter 2 Locations and Physical Conditions of Graveyards	17
2.1. Geographic Distribution of Graveyards	17
2.2. Age of Graveyards	17
2.3. Area of Graveyards	18
2.4. Encroachment of Graveyard Land	19
2.5. Graveyards in Inhabited Colonies	21
2.6. Specific Location and Ownership of Land	22
2.7. Localities Dependent on Graveyards	23
2.8. Physical Conditions of Graveyards	24
Chapter 3 Management of Graveyards	25
3.1. Management Structure	25
3.2. Persons Engaged in Maintenance	26
3.3. Fund Management, Accountability and Transparency	26
Chapter 4 Functioning of Graveyards	27
4.1. Number of Funerals in a Month	27
4.2. Documentation	27
4.3. Adequacy of Graveyards for Dependent Areas	28
4.4. Areas with Substantial Muslim Population and Graveyards	28
4.5. Payment for using the Graveyards	29
4.6. Capacity of Graveyards	30
4.7. Current Vacancies in Graveyards	31
4.8. Suggestions for Future Development	32
Chapter 5 Conclusions	33
Chapter 6 Recommendations	35
Appendix 1 Salient Particulars of Functional Graveyards	37
Appendix 2 Existing Facilities, Future Plan, Charges, Capacities and Vacancies in Functional Graveyards	45
Appendix 3 List of Non-functional Graveyards	51
Appendix 4 List of Graveyards located in Inhabited Colonies	52
Appendix 5 List of Encroached Graveyards	54
Appendix 6 Consolidated List of all Functional, Non-functional and Non-traceable Graveyards	56
Appendix 7 Research Tools	71
Appendix 8 Photo Gallery	74

PREFACE

The process of urbanization in India has gained momentum in recent years, as we see the share of people living in urban areas reaching 31.16% of the total population according to the Census of India 2011. Notwithstanding its positive impact, urbanization has resulted in shrinkage of urban spaces and increasing demand for better physical infrastructure. The National Capital Territory (NCT) of Delhi, one of the 10 fastest growing cities of India, faces many of the challenges of urbanization including shrinkage of capacity of infrastructure to accommodate the demands of people. One such challenge that is increasingly evident in Delhi is the inadequate availability of space for graveyards of the Muslim community. Realizing the gravity of situation, the Delhi Minorities Commission, Government of NCT of Delhi, commissioned a study to understand the problems and status of graveyards in the city so that remedial measures could be implemented before the situation reaches unmanageable proportions.

Human Development Society (HDS), an organization with over 14 years of experience in exploratory research, project evaluation, monitoring, documentation and implementation of development projects at the grassroots, was entrusted with the task of conducting the study. HDS visited existing graveyards in all the 11 districts of the NCT and collected data on the status of their physical infrastructure and functional dynamics. The HDS research team also interacted with members of the Muslim community. The report has been prepared keeping in view the objectives of the study. It is expected that the findings and recommendations of the study would serve the intended purpose.

HDS is thankful to the Delhi Minorities Commission, Government of NCT of Delhi, for entrusting it the task of conducting this contextually relevant study. We are grateful to the functionaries of graveyards and members of the Muslim community for sharing relevant data and views on the nature of challenges faced by graveyards in the city. The study could not have been completed without these invaluable inputs. The research team of HDS deserves appreciation for collecting and analyzing data, and for providing necessary clarifications during the course of preparation of the report.

Anil Kumar Das, Ph.D.
Director, Human Development Society

7 December, 2017

ACRONYMS AND ABBREVIATIONS

ASI: Archaeological Survey of India

CCTV: Closed-circuit television

CGO: Central Government Offices

DDA: Delhi Development Authority

DIFC: Department of Irrigation and Flood Control

DSIIDC: Delhi State Industrial and Infrastructure Development Corporation Ltd.

DWB: Delhi Waqf Board

JMI: Jamia Millia Islamia

MCD: Municipal Corporation of Delhi

MLA: Member of Legislative Assembly

NCT: National Capital Territory

PWD: Public Works Department

RTI: Right to Information

EXECUTIVE SUMMARY

The study of the problems and status of graveyards in Delhi was conceived by the Delhi Minorities Commission, Government of NCT of Delhi keeping in view the growth of the Muslim population in the city, and the increasing concerns of the Muslim community about the shortage of space for graveyards. News reports indicate gradual shrinkage of space for graveyards due to encroachment of graveyard land, urbanization, non-allotment of land for new graveyards, high demand for graveyards attached to mosques and *dargahs*, and construction of concrete tombs. The study is a need-based exercise to understand various aspects of functioning of graveyards and to find ways for addressing the challenges. The salient aspects of the study have been presented in the following sections in the shape of an executive summary.

KEY OBJECTIVES

The key objectives of the study are to:

- ❖ Ascertain the number and locations of existing graveyards;
- ❖ Assess the requirement of graveyards for Muslim community in Delhi;
- ❖ Find out the nature of ownership of graveyards;
- ❖ Analyse the status of existing graveyards keeping in view the land and facilities;
- ❖ Identify graveyards in inhabited colonies and scope of their relocation; and
- ❖ Recommend measures for addressing the challenges faced by graveyards in the city.

METHODOLOGY

This is an exploratory study modeled on research-cum-documentation format, wherein analysis of existing macro-level scenario goes hand-in-hand with the documentation of graveyard-specific status. The focus of data collection was on, *inter alia*, physical parameters, views of stakeholders and operational dynamics of graveyards. The methods used for collection of data are review of literature, visits to all existing graveyards, photography and interaction with community members. The methods for data analysis involved data cleaning, preparation of research notes, coding and analysis with the help of Statistical Package for Social Sciences software.

SALIENT FINDINGS

Location and Physical Conditions of Graveyards

- ❖ Presently Delhi has 131 graveyards that physically exist, but 16 graveyards out of them are not functioning due to litigation, bad landscape, etc.
- ❖ Although the Muslim population of the city has increased, very few graveyards have been developed in the recent past, with only five graveyards that are less than 10 year old.
- ❖ The areas of graveyards are mostly small, measuring 10 *bighas* or less, with 61 (46%) of them in the category of 5 *bighas* or less.

- ❖ Encroachment of graveyard land is a major challenge in the city, as most of 624 graveyards listed in the website of Delhi Waqf Board (DWB) do not physically exist today. Even 43 of the existing ones have their lands encroached by different entities like community people, private individuals, private companies and government agencies.
- ❖ The city has 46 graveyards located in inhabited colonies.
- ❖ With most of the existing graveyards being just pieces of land, the number of graveyards located in close proximity of religious sites or institutions like mosque, grave of *pir* (or *mazar*) and *eidgah* land is few (only 28 out of 131).
- ❖ Nearly half of the existing graveyards are owned by DWB (62 or 47%), followed by community ownership, personal ownership, MCD and DDA in descending order.
- ❖ In the case of a majority of the graveyards (72 or 55%), the distance of the farthest areas that are dependent on them is in the range of 2 to 5 kilometers. There are also graveyards that receive people coming from a distance of over 10 kilometers.
- ❖ Although physical facilities like space for *namaz-e-janaza* (funeral prayer) (32 or 24%), water (33 or 25%), boundary wall (77 or 59%), streetlight (31 or 24%) and guards (30 or 23%) are available in some graveyards, there are many without these facilities and some have none at all.

Management of Graveyards

- ❖ Management structures of graveyards are dependent on the nature of ownership of graveyard land. While management committees exist for graveyards owned by DWB, MCD and communities; there are graveyards owned by families or community in some places without any kind of management committee in place.
- ❖ Maintenance staff/persons in the graveyards are available with only few, as most of the graveyards (85 or 65% of the total 131) have no one for the purpose.
- ❖ There is scope for improving the level of transparency and accountability in the management of graveyards, which receive payments and spend money for maintenance.

Functioning of Graveyards

- ❖ The number of graveyards which conduct less number of funerals in a month is more (5 or less funerals in 51 graveyards) than those which conduct more funerals (more than 30 funerals in 9 graveyards).
- ❖ The requirement of documentation is minimal, as graveyards require only proof of identity at the time of performance of the last rites.
- ❖ Majority of graveyards (75 or 57%) reported inadequate space for the number of deaths that take place in their dependent areas.
- ❖ While a majority of graveyards (73 or 56%) does not receive any payment from people for using the facility, the range of payment is between Rs.201 to 2000 in most of the graveyards which receive payment (42 or 32%).

Graveyards with high capacity (4 graveyards have more than 5000 capacity) is less in number than those with low capacity (25 graveyards have 200 or less capacity).

- ❖ The current level of vacancies indicates shrinkage of space in the existing graveyards, as the number of graveyards with less vacancies (24 graveyards have 100 or less vacancies) is more than those with high vacancies (only 2 have more than 2000 vacancies).
- ❖ Keeping in view the number of approximate deaths in the Muslim community in a year, *i.e.*, 13000, and current level of total vacancies in graveyards (29370), there may not be any vacancy in the graveyards of the city after about two to three years from now.

RECOMMENDATIONS

The study recommends the following measures:

- ❖ **Increase of the capacities of existing graveyards** by land filling, removal of encroachments, and priority handling of litigations;
- ❖ **Construction of new graveyards**, especially in areas like the North East, Shahdara, South and South East districts;
- ❖ **Retrieval of lost graveyards;**
- ❖ **Adoption of space-saving and *kachcha* method viz. re-use of graves** after a few years;
- ❖ **Implementation of suggestions to improve the existing facilities in graveyards** like construction of boundary wall, installation of street light, guards on duty, provision for water tank, space for *namaz-e-janaza*, room for caretaker/guard, construction of footpath and entry gate, and land clearing;
- ❖ **Transparency and accountability** in managements of graveyards which receive money from the users and deal with DWB; and
- ❖ **Awareness generation** among the Muslim community about issues like adoption of space-saving and *kachcha* method of burial, no construction of concrete tombs or any kind of permanent markers on graves, and removal of encroachments.

Awareness programmes could be in the form of round-table discussions, community-level meetings, and implementation of the recommended space-saving and *kachcha* method of burial on **pilot basis to generate demonstration effect**. The DMC may act as the nodal agency for implementing awareness-generation programmes.

Chapter 1

INTRODUCTION

کتنا ہے بد نصیب ظفر دفن کے لیے
دو گز زمین بھی نہ ملی کوئے یار میں

*Kitnaa hai bad-naseeb "Zafar" dafn key liye
Do gaz zameen bhee na mili kuu-e-yaar mein*

— *Bahadur Shah Zafar*
the last Mughal Emperor and a noted Urdu poet

The study of the problems and status of graveyards in Delhi reminds one of the above couplet by Bahadur Shah Zafar, which in English reads as “how unfortunate is Zafar that he cannot get two yards of land for his burial in his beloved country!”. Although said in the context of his exiled status (in Rangoon, now called Yangon, in Myanmar), the couplet is relevant to the context of the study of graveyards in Delhi, which has over two million Muslim population according to the Census of India 2011. Growth of Muslim population in the city coincides with the increasing concerns of the community about the shortage of space for graveyards. News reports of recent past indicate gradual shrinkage of space for graveyards due to factors like encroachment of graveyard land, urbanization, non-allotment of land for new graveyards, high demand for graveyards attached to Mosques and *dargahs*, and construction of concrete tombs.¹ The status of graveyards in the capital requires an objective analysis of the scenario on the ground; and needless to say, the study is a need-based exercise, as finding a final resting place for a loved one is closely linked to human emotion and our respect for the dead.

The sections below contain the objectives of the study, its methodology and other related aspects.

1.1 OBJECTIVES

The objectives of the study are to:

- ❖ Ascertain the number and location of existing graveyards;
- ❖ Assess the requirement of graveyards for Muslim community in Delhi;
- ❖ Identify areas with substantial Muslim population and understand the extent of availability of graveyards in their vicinity;

¹ “Even dead jostles for space”, *Deccan Herald* (4 November 2012), Retrieved on 21 February 2017 from <http://www.deccanherald.com/content/290021/even-dead-jostles-space.html>; “Capital’s graveyard space shrinking: RTI”, *The Sunday Guardian* (27 September 2014), Retrieved on 20 February 2017 from <http://www.sunday-guardian.com/investigation/capitals-graveyard-spce-shrinking-rti>; “A grave matter: Illegal land deals have made Muslim burial a costly affair”, *Hindustan Times* (16 November 2014), Retrieved on 20 February 2017 from <http://www.hindustantimes.com/india/a-grave-matter-illegal-land-deals-have-made-muslim-burial-a-costly-affair/story-05lmWSyIhB9X92RhUduVFN.html>; “India running out of land for graveyards”, “Of ‘562 graveyards in capital’ most are encroached, 11 by ASI”, *Beyond Headlines* (5 August 2011), Retrieved on 22 February 2017 from <http://beyondheadlines.in/2011/08/562-graveyards-stolen-from-the-capital-10-encroached-by-asi/>

- ❖ Find out the nature of ownership of graveyards under institutional ownership or private ownership;
- ❖ Analyse the status of existing graveyards keeping in view the land and facilities available with the graveyards;
- ❖ Identify graveyards located within the inhabited colonies and the scope of their relocation;
- ❖ Find out the prescriptions of laws and policies regarding allotment of land for graveyards and their management; and
- ❖ Recommend measures for addressing the challenges faced by graveyards in the city.

1.2 GEOGRAPHIC COVERAGE

This study covers the entire National Capital Territory (NCT) of Delhi.

1.3 METHODOLOGY

This is an exploratory study of the challenges and status of graveyards in Delhi with the principal focus on study of conditions of each of the existing graveyards. The study has been modeled on research-cum-documentation format, wherein analysis of existing macro-level scenario goes hand-in-hand with the documentation of graveyard-specific status. Accordingly, physical parameters, views of stakeholders, operational dynamics of graveyards and review of literature on challenges faced by graveyards in the city were the focus of data collection exercise. Since the purpose is to cover the entire universe of study as is done in a census study, there was no need for deciding a study sample.

Methods for Data Collection

The following methods were used for collection of data:

- ✓ Review of literature
- ✓ Visits to existing graveyards
- ✓ Photography
- ✓ Interaction with community members

Review of literature: The research team reviewed relevant literature like news reports, Master Plan for Delhi 2021, articles, census data etc. on the status and challenges of graveyards in Delhi. Some useful data could also be collected from the websites of Delhi Waqf Board (DWB), Municipal Corporation of Delhi (MCD) and Delhi Development Authority (DDA). Besides building a perspective on the study, review of literature helped in understanding the context, provided background data and contributed to the process of data collection and analysis.

Visits to existing graveyards: The research team visited each existing graveyard of the NCT of Delhi and gathered data about the graveyards by administering a **graveyard data sheet-cum-interview schedule**. The collected data pertained to different aspects of physical status of graveyard like the year of establishment, land size, status of encroachment, location, ownership and available facilities, management, and status of functioning.

Photography: During the field work, the research team captured photographs of most of the graveyards, except those whose management did not allow photography, giving a clear visual presentation of the physical existence of the graveyards. In many cases, more than one photograph was taken.

Interaction with community members: Interactions with community members were meant for capturing views in regard to sufficiency of existing graveyards, their problems, areas known for shortage of graveyards, and suggestions for improving conditions. A semi-structured interview schedule was used to obtain views of 50 community members belonging to different areas of the city.

Methods for Data Analysis

Each completed study tool went through the process of data cleaning during which inaccuracies, inconsistencies and omissions were identified, and rectified in conversation with the respondent or interviewer or both. This process was followed by data entry and analysis with the help of Statistical Package for Social Sciences software. Thereafter, tables, graphs and charts were prepared for inclusion in the report.

Chapter 2

LOCATIONS & PHYSICAL CONDITIONS OF GRAVEYARDS

2.1 GEOGRAPHIC DISTRIBUTION OF GRAVEYARDS

The NCT of Delhi has 131 graveyards which physically exist at present. Among the 11 districts of the city, South Delhi has the highest number of graveyards (33 or 25%) as indicated in the table below. This is followed by North West Delhi (19), North Delhi (17), South West Delhi (11), North East Delhi (10), West Delhi and East Delhi (9 each), South East Delhi (eight), Central Delhi (six), Shahdara (five), and New Delhi (four) in descending order.

Table 2.1: District-wise distribution of physically existing graveyards in Delhi

District	Number	Percentage
New Delhi	4	3
North Delhi	17	13
North West Delhi	19	14
West Delhi	9	7
South West Delhi	11	8
South Delhi	33	25
South East Delhi	8	6
Central Delhi	6	5
North East Delhi	10	8
Shahdara	5	4
East Delhi	9	7
Total	131	100

It is, however, important to note that out of 131 graveyards, 16 are currently not in use. The reasons for non-use are litigation over ownership of graveyard land, bad landscape leading to water logging or other problems, and dispute with Archeological Survey of India. The list of these non-functional graveyards is given in appendix 3.

2.2 AGE OF GRAVEYARDS

While 34% graveyards are between 101 to 200 years old, 12% (or 16) of the total are more than 200 years old. In other words, nearly half of the graveyards (46%) of the city are over 100 years old. There are 24 graveyards (18%) in the category of 51 to 100 years, and 26 graveyards (20%) are between 10 to 50 years old. With only five graveyards (4%) in the category of less than 10 years, it can be said that very few graveyards have been developed in recent past, despite increase in Muslim population of the city.

Table 2.2: Age of graveyards

Age in years	Number	Percentage
Less than 10	5	4
10 to 50	26	20
51 to 100	24	18
101 to 200	44	34
More than 200	16	12
No reply	16	12
Total	131	100

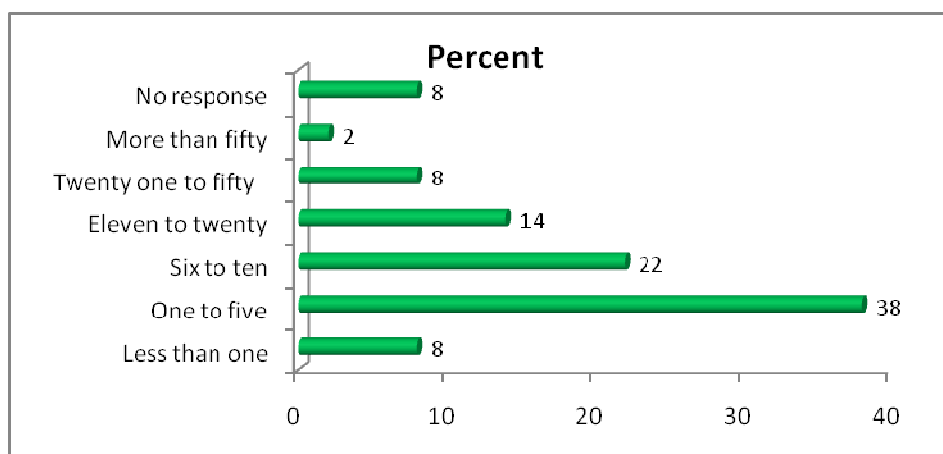
2.3 AREA OF GRAVEYARDS

The study found that most of the graveyards (68% or 89) are small in size, with areas measuring 10 bigha or less. Out of these 68% graveyards; 38% have one to five bigha land, 22% have six to 10 bigha land and only 8% are very small ones with less than one bigha land.

Among the relatively large size graveyards, 14% have 11 to 20 bigha land, 8% have 20 to 50 bigha land and only 2% or three graveyards have more than 50 bigha land.

Table 2.3: Area of graveyards

Area (in bigha)	Number	Percentage
Less than 1	11	8
1 to 5	50	38
6 to 10	28	22
11 https://en.wikipedia.org/wiki/North_West_Delhi 20	18	14
20 to 50	10	8
More than 50	3	2
No response	11	8
Total	131	100

Chart 2.1: Area of graveyards

2.4 ENCROACHMENT OF GRAVEYARD LAND

Encroachment of graveyard land is a major challenge leading to increasing shrinkage of space for the intended purpose. While the table below showing status of encroachment pertains to 131 graveyards that currently exist, there are hundreds which, although exist on record, do not exist physically mainly due to encroachment. It is important to note that the

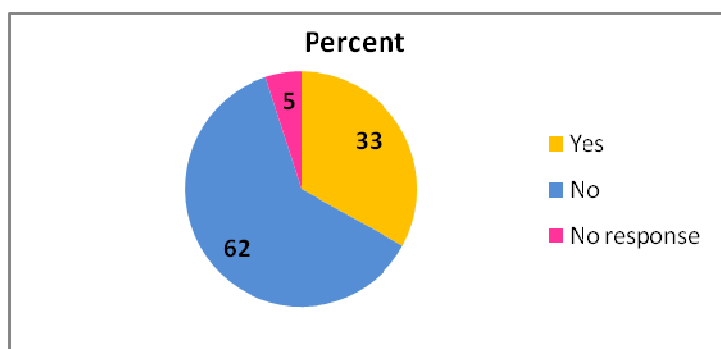
DWB has a list 624 graveyards², but most of them are not traceable today.

Out of 131 graveyards of Delhi, lands of 43 (33%) have been encroached. While the size of encroached area is between one to five bigha in case of 30% graveyards, it is less than one bigha in case of nine graveyards (21%). The number of graveyards with encroachment of higher land size is less: four graveyards with encroached land of 11 to 20 bigha, two graveyards each with encroached land of six to 10 bigha and 21 to 50 bigha, and only one graveyard reported encroachment of more than 50 bigha land.

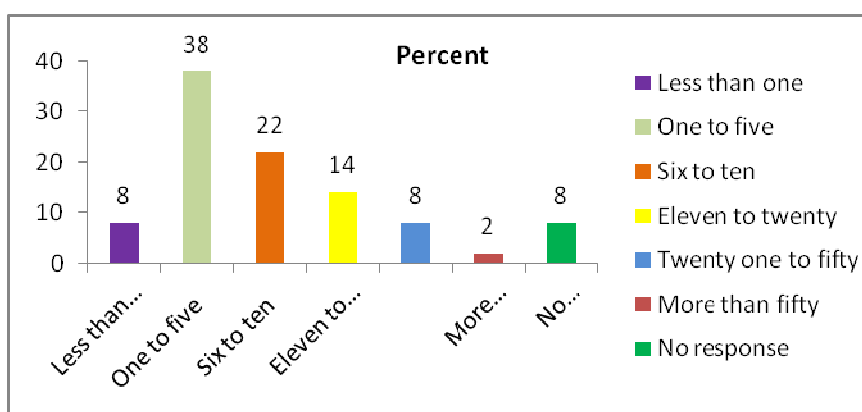
Table 2.4: Status of encroachment

Status	Number	Percentage
Yes	43	33
No	81	62
No response	7	5
Total	131	100

² <http://www.delhiwaqfboard.com/>

Chart 2.2: Status of encroachment**Table 2.5: Size of encroached land**

Encroached area (in bigha)	Number	Percentage
Less than 1	9	21
1 to 5	13	30
6 to 10	2	5
11 to 20	4	9
21 to 50	2	5
More than 50	1	2
No reply	12	28
Total	43	100

Chart 2.3: Size of encroached land

The study further found that the graveyard lands have been mostly (24 or 56%) encroached by community people/organisations. The government, as encroacher of lands of 10 graveyards, occupies second position in the list of encroachers. This finding could also be corroborated from news reports on the issue. According to a RTI reply of DWB noted in a news report, shrinkage of number of graveyards in the city is mostly due to encroachment by public and the government agencies.³ According to another report, the Archeological Survey of India has encroached 11 graveyards in Delhi.⁴ Interaction with people and news reports revealed that the Delhi Public School on Mathura Road, Indraprastha Park on Ring Road and the CGO Complex on Lodhi Road have been built on

³ "Capital's graveyard space shrinking: RTI", *op.cit.*

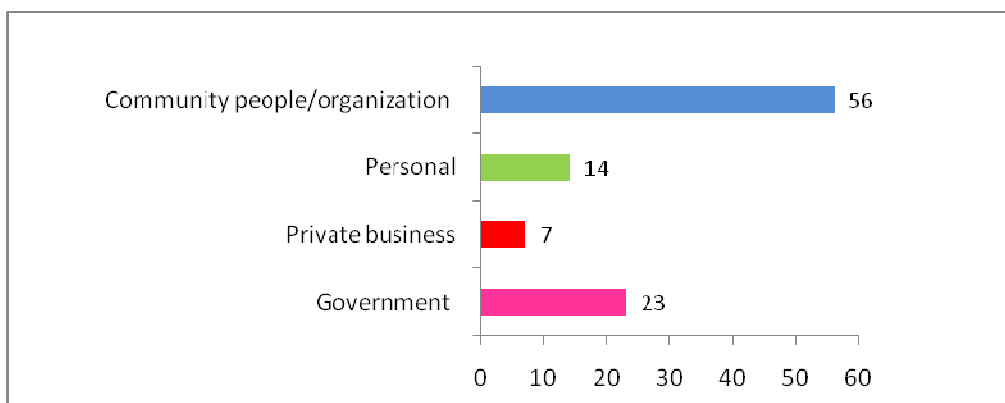
⁴ "Of '562 graveyards in capital' most are encroached, 11 by ASI", *op.cit.*

graveyard land. The study also found that lands of six graveyards have been encroached by private individuals. Private businesses have encroached lands of three graveyards.

Table 2.6: Name of encroacher

Name of encroacher	Number	Percentage
Government	10	23
Private business	3	7
Private individual	6	14
Community people/ organizations	24	56
Total	43	100

Chart 2.4: Name of encroacher (in percentage)



2.5 GRAVEYARDS IN INHABITED COLONIES

Out of the total, 46 graveyards are located in inhabited colonies. Although 15% respondents favoured relocating the graveyards to other areas, there is scope for relocating all the 46 graveyards to other areas as they are located in residential areas.

Table 2.7: Location of graveyards in inhabited colonies

Status	Number	Percentage
Yes	46	35
No	85	65
Total	131	100

Chart 2.5: Location of graveyards in inhabited colonies

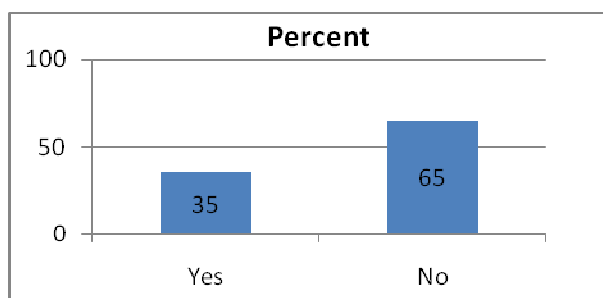


Table 2.8: Scope for relocation

Status	Number	Percentage
Yes	15	33
No	31	67
Total	46	100

2.6 SPECIFIC LOCATION AND OWNERSHIP OF LAND

Graveyard located in close proximity of or within a religious place is a preferred choice by many Muslims for performing last rites of their loved ones. The study found that 17 (13%) out of 131 existing graveyards are located in close vicinity of mosques, six are located on the side of grave of *pir* or *mazar*, and five are functioning within *eidgah* land. However, there are 103 graveyards (79%) which are not located in close proximity of any religious site. These are only graveyard land.

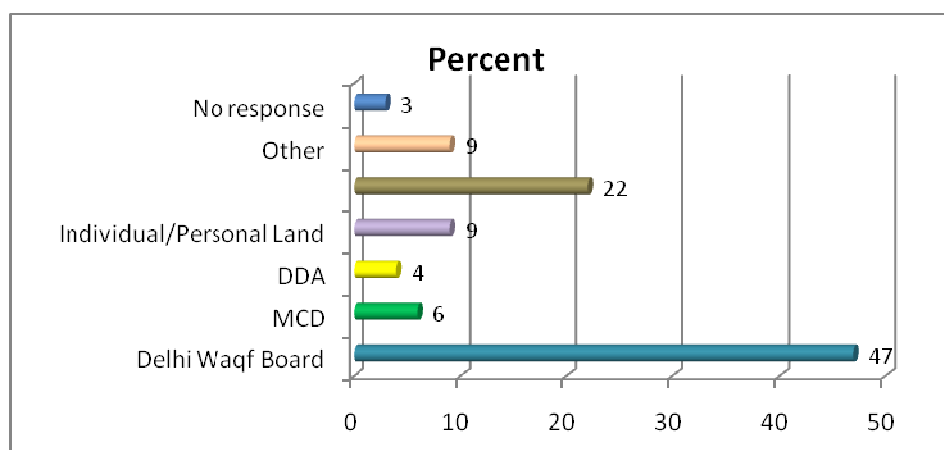
Table 2.9: Specific location of graveyards

Specific location	Number	Percentage
In close vicinity of mosque	17	13
On the side of grave of <i>pir</i> or <i>mazar</i>	6	4
Only graveyard land	103	79
Within <i>eidgah</i> land	5	4
Total	131	100

As regards ownership of graveyard land, majority of them (47%) are owned by DWB. This is followed by community ownership of land in case of 29 graveyards (22%), which refers to ownership by the village or *gram sabha* or a specific caste group. While the land belongs to MCD and DDA in case of eight and five graveyards respectively, there are 11 graveyards which are located on lands of private individuals.

Table 2.10: Ownership of graveyard land

Ownership	Number	Percent
DWB	62	47
MCD	8	6
DDA	5	4
Individual/personal land	11	9
Community (village / caste ownership/ gram sabha)	29	22
Others (Delhi Cantt., JMI, DIFC)	12	9
No response	4	3
Total	131	100

Chart 2.6: Ownership of graveyard land

2.7 LOCALITIES DEPENDENT ON GRAVEYARDS

The areas that are dependent on a particular graveyard indicate the geographical reach as well as the extent of people's dependency on the facility. The study found that the farthest areas that are dependent on graveyards are at a distance of two to five kilometers in case of 72 graveyards (the highest share). While 19 graveyards have the farthest areas located at a distance of six to ten kilometers from the graveyards, the farthest areas are at a distance of less than two kilometers in case of 17 graveyards and more than 10 kilometers in case of three graveyards. While 16 graveyards are not in use at present, respondents of four graveyards did not share distance of the farthest areas.

Table 2.11: Distance of Farthest Area

Distance (in km.)	Number	Percent
Less than Two	17	13
Two to five	72	55
Six to ten	19	15
More than ten	3	2
Not in use	16	12
No response	4	3
Total	131	100

The areas that are dependent on each graveyard are given in appendix 1. These dependent areas are the areas inhabited by the Muslim population.

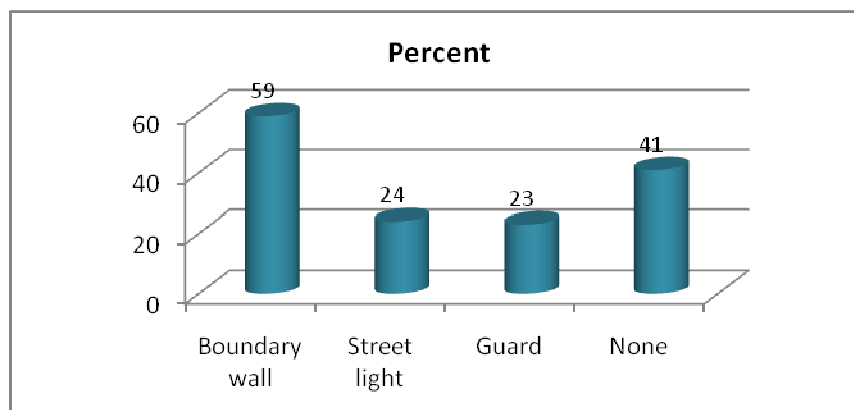
2.8 PHYSICAL CONDITIONS OF GRAVEYARDS

Interaction with concerned persons of graveyards and observation of physical parameters helped in understanding the status in regard to physical conditions of graveyards. The study found that only 32 graveyards of the city have space for *namaz-e-janaza* and 33 have water bore-wells. While 77 graveyards have boundary walls and 31 have street lights, only 30 have guards. The graveyards without boundary walls are open fields.

Table 2.12: Existing key facilities

Facilities	Number	Percent
Space for <i>namaz-e-janaza</i>	32	24
Water bore-well	33	25
Boundary wall	77	59
Street light	31	24
Guard	30	23
No response	1	1

Chart 2.7: Existing key facilities



Chapter 3

MANAGEMENT OF GRAVEYARDS

3.1 MANAGEMENT STRUCTURE

Keeping in view the existing structures of management, the graveyards of the city can be put under nine different categories, as noted below. These management structures are linked to the nature of ownership of graveyard land.

- i. **DWB graveyards:** Management Committee, consisting of local community people, manages the affairs of the graveyard, but it is under the administrative control of DWB. There are also graveyards belonging to communities, which approach DWB for taking the facility under its fold. In this case, the existing management committee of community people comes under the DWB.
- ii. **MCD graveyards:** Management Committee consists of local community people. While day-to-day management issues are handled by the Management Committee, MCD takes up repair work or such other matters related to upkeep of the graveyards, whenever they are brought to its notice by the Management Committee.
- iii. **DDA graveyards:** In case of graveyards functioning on DDA land, the management is done by the community people. DDA is not involved in any management matter. Unlike MCD, DDA is not involved in repairs or such other matters related to upkeep of graveyards.
- iv. **Graveyards under DIFC and others:** Here the system is almost same as that of the MCD. The Management Committee functions under the respective organizations that own the graveyards, and repairs and other work are done by the concerned agencies wherever the matters are intimated to them.
- v. **Management Committee under a registered entity:** This is applicable for graveyards that are under the control of the local communities. Management Committee consisting of local people works under the banner of a registered organization, or the graveyard's name is registered as a Society under a relevant Act and the Management Committee functions under it.
- vi. **Management Committee of community people:** This system is applicable for some of the graveyards under the control of the local community. The Management Committee consists of local people, but the name of graveyard is not registered or there is no registered organization under which the Management Committee works like the earlier category.
- vii. **Management by a community member:** These graveyards are owned by the community, but are managed by a member of the community who is given the responsibility by community people.
- viii. **Family-owned graveyards:** These are family-owned private graveyards. A family member or a person, who is given the responsibility by the family which owns the graveyard land, manages the affairs of the graveyard.
- ix. **Graveyards without management:** There are also graveyards that have no management structure, as these are pieces of land earmarked by the community

as graveyards which are used by the community people for the intended purpose. No one feels the need of having a management committee in this case.

3.2 PERSONS ENGAGED IN MAINTENANCE

Besides management committee, some of the graveyards have people engaged in day-to-day maintenance. However, most of the graveyards (85 or 65%) do not have anyone for maintenance. While 24 graveyards (18%) have only one person and 7 graveyards have two persons for maintenance, the numbers of graveyards with three and more than three persons for maintenance are 9 and 6 respectively.

Table 3.1: Number of persons engaged in maintenance

Number	Number	Percent
None	85	65
One	24	18
Two	7	5
Three	9	7
More than three	6	5
Total	131	100

3.3 FUND MANAGEMENT, ACCOUNTABILITY AND TRANSPARENCY

According to the data obtained during field work, except the DWB graveyards, all others which collect money spend it for the purpose of maintenance without giving the money to MCD or DDA or others who own the land. In case of DWB, the management committees of graveyards, that collect money from the users, submit a statement of income and expenditure to DWB. The balance money, if any, that remains after incurring expenditure, is deposited with DWB. However, the caretakers of DWB graveyards do not receive any remuneration from DWB. It has also come to the notice of research team that some of the graveyards do not issue receipt even if they receive payments from the users. There is scope for improving the level of transparency and accountability in the management of graveyards, which receive payments and spend money for the purpose of maintenance.

Chapter 4

FUNCTIONING OF GRAVEYARDS

Functioning of graveyards has many facets, as noted below, which together indicate the extent of their use by the Muslim community and the challenges faced by these facilities. They also provide inputs for future development of graveyards in the city.

4.1 NUMBER OF FUNERALS IN A MONTH

The number of funerals conducted in a month is a yardstick to understand the extent to which graveyards are used in the city. As indicated in the table below, graveyards that conduct only 5 or less funerals in a month are the highest (51 or 39%) of all the categories. While 14 graveyards conduct 11 to 20 funerals and 13 conduct 6 to 10 funerals during a month, the corresponding numbers for 21 to 30 and more than 30 funerals during a month are 8 and 9 respectively. The study also found that 13 graveyards are infrequently used as only few funerals take place in them during a whole year, and 16 graveyards are not at all in use at present.

Table 4.1: Number of funerals in a month

Number	Number	Percent
5 or less	51	39
6 to 10	13	10
11 to 20	14	11
21 to 30	8	6
More than 30	9	7
Infrequently used (few in a year)	13	10
No response	7	5
Not in use	16	12
Total	131	100

4.2 DOCUMENTATION

According to the existing practices, graveyards require proof of identity like Aadhar card, driving license etc. of a family member at the time of performance of last rites. After performance of last rites, the bereaved family is given a written proof of the conduct of last rites which is later used for obtaining death certificate from concerned authority i.e. the municipality. In case of graveyards without management committee or without any caretaker, the families obtain proof of performance of last rites from the local Imam or people's representatives like MLA.

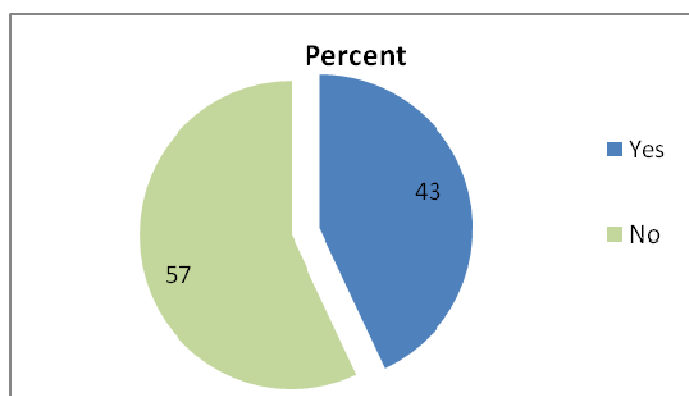
4.3 ADEQUACY OF GRAVEYARDS FOR DEPENDENT AREAS

The respondents were asked to judge the extent of adequacy of the graveyards keeping in view the number of deaths that take place in the areas that depend on the facility. Out of total 131 existing graveyards, only 56 (43%) were considered adequate for the deaths that take place in their dependent areas.

Table 4.2: Status of adequacy of graveyards for the number of deaths in the areas

Status	Number	Percent
Yes	56	43
No	75	57
Total	131	100

Chart 4.1: Status of adequacy of graveyards for the number of deaths in the areas



4.4 AREAS WITH SUBSTANTIAL MUSLIM POPULATION AND GRAVEYARDS

The table below contains the names of Muslim dominated areas, total Muslim population in the district and the number of graveyards in the district. Population of South East and Shahdara districts has not been given as these districts were formed after Census of India 2011. Based on Muslim population and number of graveyards in the districts, it can be said that new graveyards should be constructed in four districts namely North East, Shahdara, South and South East.

Table 4.3: Areas with substantial Muslim population and number of graveyards

District	Areas with substantial Muslim population	Muslim Population of District (Census of India, 2011)	No. of graveyards in district
North	Samaypur Badli, Haiderpur, Alipur, Bakoli Village, Paana Mamoorpur, Bawana, Akbarpur Majra, Mangolpuri, Bhorgarh, Jahangirpuri, Inderlok, Wajirpur, Tri Nagar	119,792	16
North West	Qureshy Nagar, Qutab Garh Village, Daryapur Kalan, Palla colony, Bakhtawarpur	291,330	17
North East	Seelampur, Usmanpur, Babar Pur, Dayal Pur, Gokal Pur, Sonia Vihar, Sundar Nagri, Mustafabad, Khajoori Khas, New Usmanpur, Badar Pur, Ziauddin Pur, Wazirabad, Colony, Tukhmir Pur, Bihari Pur, Ghonda, Jaffrabad	657,585	10
South	Mehrauli, Hauz Khas, Okhla-Badarpur, Jaitpur, Kalu Sarai, Begumpur, Khirki Village, Hauz Rani, Chandan Hulla, Ghitorni, Aaya Nagar, Islam Colony, Auliya Colony, Pehlad Pur, Chattar Pur, Rang Puri, Fateh Pur Beri	445,914	27
South East	Shaheen Bagh, Zakir Nagar , Okhla Vihar, Noor Nagar, Hanji Colony, Johri Farm, Ghafar manzil, Pahri 1, Pahri 2, Taimoor Nagar, Ghafoor Nagar, Mahboob Nagar, Joga Bai, Batla house, Azem Dairy, Abul Afzal, Nizamuddin, Khadda Colony	Data not available in 2011 census	6
South West	Roshanpura, Village Deendarpur, Manglapuri, Najafgarh, Delhi Cantonment	112,691	9
West	Nangloi, Bakkarwala, Hastsal Vihar, Raghbir Nagar, Sawda, Vipin Garden, Quammruddin Nagar, Sultan Pur, Sultan Pur Majra, Taj Pul, Tigri, Tikri Kalan, Tikri Khurd	1,49,807	8
New Dehi	Bada Hindu Rao, Navab Ganj, Lal Kuan, Kashmiri gate, Jama Masjid, Nizamuddin, Chiti Qabar, Old Delhi, Jama Masjid	8480	4
Central	Ballimaran, Beri Wala Bagh, Malka Ganj, Nabi Karim, Paharganj, Matia Mahal, Chandni Chowk	194,278	4
Shahdara	Mandawli Village, Meet Nagar, Jyoti Colony, Budh Vihar	Data not available in 2011 census	5
East	New Kundli, Mulla Colony, Mandawali, Fazalpur, Patparganj, Village Gharoli, Buland Masjid, Chand Masjid, Welcome	178,807	9

4.4 PAYMENT FOR USING THE GRAVEYARDS

According to the data collected from the graveyards, there are 42 graveyards in the city where people are required to pay money for using the graveyards. Apart from the 16 graveyards that are not in use, no payment is made in the remaining 73 graveyards.

Table 4.4: Status regarding payment for using the graveyards

Status	Number	Percent
Yes	42	32
No	73	56
Not in use	16	12
Total	131	100

Out of the 42 graveyards that charge certain amount, the range of payment in 17 (41%) graveyards (the highest among all payment categories) is between Rs. 201 to 500. This is followed, in descending order, by the payment ranges of Rs. 501 to 1000, Rs. 1001 to 2000, Rs. 2001 to 5000, Rs. 200 or less, and more than Rs. 5000 in 10, five, four, two and one graveyard respectively.

Table 4.5: Amount charged by the graveyards

Amount (in Rs.)	Number	Percent
200 or less	2	5
201 to 500	17	41
501 to 1000	10	24
1001 to 2000	5	12
2001 to 5000	4	9
More than 5000	1	2
No response	3	7
Total	42	100

A humane approach could be noticed in regard to payments charged by the graveyards. While payment for children is less, it is either nil or nominal in case poor families.

4.5 CAPACITY OF GRAVEYARDS

Capacity refers to the number of graves that a graveyard can accommodate keeping in view the size of land on which it is located. As noted in the table below, the capacities of 25 graveyards (the highest share among all ranges of capacities) are in the range of 200 or less. This is followed by 24 graveyards with capacities in the range of 501 to 1000 (second position) and 21 graveyards with capacities in the range of 201 to 500 (third position). While 14 graveyards each have capacities in the range of 1001 to 2000 and 2001 to 5000, the capital has 4 graveyards with more than 5000 capacity. In other words, the number of graveyards with higher capacities is less than those with lesser capacities. Out of the total functioning graveyards, capacity of 13 could not be ascertained due to non-response and 16 are currently not in use.

Table 4.6: Capacity of graveyards (in number)

Capacity	Number	Percent
200 or less	25	19
201 to 500	21	16
501 to 1000	24	18
1001 to 2000	14	11
2001 to 5000	14	11
More than 5000	4	3
Not in use	16	12
No response	13	10
Total	131	100

4.6 CURRENT VACANCIES IN GRAVEYARDS

Vacancy refers to the number graves that a graveyard can accommodate keeping in view the vacant space in the graveyard. The top three categories of vacancies, as the table below shows, are 100 or less, 101 to 200 and 201 to 500, which have 24, 19 and 18 graveyards respectively under them. While only three graveyards each have 501 to 1000 and 1001 to 2000 vacancies, the number of vacancies is more than 2000 in case of two graveyards. Out of 131 graveyards, 32 have no vacancies at present. However, these graveyards manage to accommodate some new graves by repeated land-filling. But this cannot be continued for long, as repeated land-filling will increase the height of the land beyond manageable level.

Table 4.7: Current vacancies in graveyards

Vacancy category	Number	Percent
100 or less	24	18
101 to 200	19	15
201 to 500	18	14
501 to 1000	3	2
1001 to 2000	3	2
More than 2000	2	2
No vacancy	32	24
Not in use	16	12
No Response	14	11
Total	131	100

If the current number of vacancies is analysed keeping in view the number of deaths among Muslims of Delhi and other related data, as given in table below, the situation looks truly problematic. According to data available with the Directorate of Economics & Statistics and Office of the Chief Registrar (Births and Deaths), Government of NCT of Delhi, the number of deaths among Muslims in the city was 12799 in 2015.⁵ This figure almost tallies with the number of approximate deaths given in the consolidated table below, which has been compiled from the data obtained from graveyards of the city. At the current rate, there may not be any vacancy in the graveyards after about two to three years from now.

⁵ *Annual Report on Registration of Births and Deaths in Delhi- 2015*, Government of NCT of Delhi, Directorate of Economics & Statistics and Office of the Chief Registrar (Births and Deaths), 2016, p.19.

Table 4.8: Consolidated key data on functioning of graveyards in Delhi

Total number of existing graveyards	Total number of graveyards not in use	Total capacity of all functional graveyards	Total vacancies in all functional graveyards at present	Total approximate number of funerals conducted in a year
131	16	127470	29370	13000

4.7 SUGGESTIONS FOR FUTURE DEVELOPMENT

The respondents made several suggestions for future development of graveyards as given in the following table. These suggestions have been presented below under two analytical categories.

Suggestions to increase the capacities of graveyards:

- ❖ Land filling
- ❖ Expansion of areas of graveyards

Suggestions to improve the existing facilities:

- ❖ Construction of boundary wall
- ❖ Installation of street light
- ❖ Guards on duty
- ❖ Provision for water tank
- ❖ Provision of space for *namaz-e-janaza* (funeral prayer)
- ❖ Provision of room for caretaker/guard
- ❖ Construction of footpaths
- ❖ Construction of entry gate and
- ❖ Land clearing

Table 4.9: Suggestions for future development of graveyards

Suggestion	Number	Percent
Construction of boundary wall	39	30
Installation of street light	56	43
Guards on duty	21	16
Provision for water tank	31	24
Land filling	20	15
Expansion of area of graveyard	15	12
Provision of space for <i>namaz-e-janaza</i> (funeral prayer)	16	12
Provision of room for caretaker/guard	21	16
Construction of footpath	16	12
Construction of entry gate	12	9
Land clearing	13	10
Others (provision for manpower, sewage system)	21	16
Not in use	16	12
No reply	23	18

Chapter 5

CONCLUSIONS

The following conclusions have been arrived at on different aspects of the study keeping in view the analyses made in the foregoing chapters.

Location and Physical Conditions of Graveyards

- ❖ The number of physically existing graveyards in the NCT of Delhi is 131. This includes 16 graveyards which are not functioning due to litigation, bad landscape etc.
- ❖ Although the Muslim population of the city has increased, very few graveyards have been developed in the recent past.
- ❖ The areas of graveyards are mostly small, measuring 10 *bigha* or less, with 46% of them in the category of five *bigha* or less.
- ❖ Encroachment of graveyard land is a major challenge in the city. Although DWB has 624 graveyards in its list, only 131 exist today. Even 43 of the existing ones have their lands encroached by different entities like community people, private individuals, private companies and government agencies.
- ❖ The city has 46 graveyards located in inhabited colonies.
- ❖ The number of graveyards located in close proximity of religious sites or institutions like mosque, grave of *pir* or *mazar* and *eidgah* land is few. Most of the graveyards are only graveyard lands.
- ❖ Nearly half of the graveyards are owned by DWB, followed community ownership, personal ownership, MCD and DDA in descending order.
- ❖ In case of majority of the graveyards (72 or 55%), the distance of the farthest areas that are dependent on them is in the range of two to five kilometers. There are also graveyards that receive people coming from distance of over 10 kilometers.
- ❖ Although physical facilities like space for *namaz-e-janaza*, water, boundary wall, streetlight and guards are available in some graveyards, there are many without these facilities and some have none at all.

Management of Graveyards

- ❖ Management structures of graveyards are linked to the nature of ownership of graveyard land. While management committees exist for graveyards owned by DWB, MCD and communities; there are graveyards owned by families or community in some places without any kind of management committee in place.
- ❖ Maintenance staff/persons in the graveyards are available with only few, as most of the graveyards (85 or 65% of the total 131) have no one engaged for the purpose.
- ❖ There is scope for improving the level of transparency and accountability in the management of graveyards, which receive payments from users and spend money for maintenance.

Functioning of Graveyards

- ❖ The number of graveyards which conduct less number of funerals in a month is more than those which conduct more funerals.
- ❖ The requirement of documentation is very minimal, as graveyards require only proof of identity at the time of performance of last rites.
- ❖ Shortage of graveyard space could be observed in case of majority of graveyards, as they are not adequate for the number of deaths that take place in their dependent areas.
- ❖ While majority of graveyards do not receive any payment from people for using the facility, the range of payment is between Rs.201 to 2000 in most of the graveyards which receive payment.
- ❖ Graveyards with high capacity is less in number than those with low capacity.
- ❖ Current level of vacancies indicates shrinkage of space in existing graveyards, as the number of graveyards with less vacancies is more than those with high vacancies.
- ❖ Keeping in view the number of deaths in the Muslim community in a year and current level of vacancies, there may not be any vacancy in the graveyards of the city after about two to three years from now.

Chapter 6

RECOMMENDATIONS

The study recommends the following measures to address the challenges faced by graveyards of the city and the Muslim community in general.

Increase of the Capacities of Existing Graveyards

There is an urgent need to increase the capacities of existing graveyards by implementing the following measures.

- ❖ **Land filling:** There are graveyards in Delhi that can accommodate more graves if land filling is done. While the responsibility of this lies with the management committee, the Government of the NCT of Delhi may act proactively, as a bit of prodding and technical support may set the things in motion.
- ❖ **Removal of encroachments:** Considering the extent of challenge, removal of encroachments from the graveyards is the need of the hour as it would free space for its intended purpose. Notwithstanding the administrative difficulties that may arise as a result of this action, the Government of the NCT of Delhi should initiate the measure on priority basis for the benefits of the Muslim community in general. Any action for removal of encroachments should be implemented with firmness yet sensitivity and compassion. Persons using graveyard space for commercial purpose should be dispossessed, while those living there should be allotted land or flat elsewhere to live.
- ❖ **Priority handling of litigations:** This is applicable for graveyards that are currently not in use due to litigations. The Government may take up these cases for priority handling so that the lands are used for the intended purpose.

Construction of New Graveyards

Efforts should be made for construction of new graveyards in areas of Delhi where land may be available and where there is a paucity of graveyards like in the North East, Shahdara, South and South East districts. Construction of new graveyards should be planned keeping in view the relevant provisions of the Master Plan for Delhi- 2021 of the DDA. According to the Master Plan, there should be provisions for proper parking and landscape, and the plot area should be up to 1.0 hectare per 10 lakh population for a burial ground subject to availability of land.

Retrieval of Lost Graveyards

The Government of NCT of Delhi in consultation with DWB, DMC and other concerned agencies should initiate measures for retrieving hundreds of lost graveyards in the city. Even a partial success would bring great relief to the Muslim community.

Adoption of Space-saving and *Kachcha* Method

- ❖ ***Kachcha* method:** *Kachcha* method, with no permanent or concrete graves, should be adopted in all graveyards of Delhi for reburial in the same space after a few years. This method is adopted in some parts of India and abroad like Saudi Arabia.

Suggestions to Improve Existing Facilities

The following suggestions of people may be implemented to bring in functional efficiency by the respective landowning agencies like DWF (in most cases), MCD and others:

- ❖ Construction of boundary walls;
- ❖ Installation of street lights;
- ❖ Guards on duty;
- ❖ Provision for water tank;
- ❖ Provision of space for *namaz-e-janaza* (funeral prayer);
- ❖ Provision of room for caretaker/guard;
- ❖ Construction of footpaths;
- ❖ Construction of entry gate; and
- ❖ Land clearing.

Transparency and Accountability

Managements of graveyards, especially those which receive money from the users and the DWF should look into the issues of transparency and accountability, and should put in place an efficient system of fund management and a form of democratically-elected committees to manage graveyards.

Awareness Generation

There is a need to generate awareness among the Muslim community about issues like adoption of space-saving and *kachcha* method of burial like the one recommended above, no to construction of concrete tombs or any kind of permanent markers on graves, removal of encroachments, and acceptance of any such reform measures that may be considered relevant in future.

Awareness programmes should specifically target Imams, Maulanas, Muftis, Muslim intelligentsia, persons who have excelled in their vocations, people's representatives, civil society organizations, community elders, and opinion makers.

The awareness programmes could be in the form of

- ❖ Round-table discussions,
- ❖ Community-level meetings, and
- ❖ Implementation of the recommended space-saving and *kachcha* method of burial on **pilot basis to generate demonstration effect.**
- ❖ Encouragement to form democratically-elected committees to run graveyards.

The DMC may act as the nodal agency for the purpose of implementing the awareness generation programmes effectively.

Appendix 1

SALIENT PARTICULARS OF FUNCTIONAL GRAVEYARDS

S. No.	District	Name of graveyard	Address of graveyard	Dependent area	Area of graveyard	Ownership of graveyard	Distance of farthest area from graveyard	Status of adequacy of space (Yes/No)
1	North	Qadimi Qabristan Madina Masjid	Mukarba Chowk, GTK Road Bypass, Delhi	Jahangirpuri, Rajeev Nagar, Samaipur Badli, Haiderpur	2 acre	Community	10 km	No
2	North	Muslim Qadimi Qabristan	Khasra No. 6061, Azadpur Village, Near Azadpur Flyover, Delhi	Inderlok, Rampura, Pathar Vala Bagh, Tri Nagar, Wajirpur, Rana Pratab Bagh, Model Town, Sangam Park, Dhaka, Malikpur, Adarsh Nagar, Azadpur	9 bigha 8 biswa	Delhi Waqf Board	8 km	No
3	North	Muslim Graveyard	6/27 Samaypur, Delhi	Libaspur, Samaypur, Badli and other 25 colonies	6 bigha 2 biswa	Delhi Waqf Board	5 km	No
4	North	Kheda Kala Qabristan	Garhi Colony, Khera Khurd, Delhi	Khera Kalan, Chota Khera Khurd	8 bigha	Delhi Waqf Board	3 km	Yes
5	North	Holambi Kalan Qabristan	Holambi Kalan, Delhi	Holambi Kalan	2 bigha 14 biswa	Delhi Waqf Board	2 km	No
6	North	Alipur Qabristan	Village Alipur, Narela Road, Delhi	Alipur, Mero Vihar, Bakoli Village	14 bigha 12 biswa	Delhi Waqf Board	4 km	Yes
7	North	Mamoorpur Qabristan	Village Paana Mamoorpur, Near ML School, Narela, Delhi	Paana Mamoorpur, Tekri Khurd, Ganga Ram Colony, B2 Community, Pocket 4, 5, 8, 11 and 13 of Narela	19 bigha	Narela Management Committee	5 km	Yes
8	North	Khuraini Qabristan	Khuraini Qabristan, Near Khuraini Masjid, Narela, Delhi	Village Khuraini	15 bigha	Community	2 km	Yes
9	North	Razapur Qabristan	Bhorgarh, Narela, Delhi	Narela Industrial Area and Bhorgarh	6 bigha 2 biswa	Delhi Waqf Board	2 km	No
10	North	Nangal Thakran Qabristan	Khasra No. 4/23, Village Nangal Thakran, Narela, Delhi	Only for Abbasi community	25 bigha	Personal	1 km	Yes
11	North	Nangal Thakran Qabristan	Khasra No. 4/12, Village Nangal Thakran, Narela, Delhi	Village Nangal Thakran	18 bigha	Personal	1 km	Yes
12	North	Bawana Qabristan	Village Bawana, Near Gramin Gaushala (cowshed), Delhi	Bawana	3 bigha 3 biswa	Delhi Waqf Board	2 Km	No
13	North	Akbarpur Qabristan	Village Akbarpur Majra, Near Madena Masjid, Narela, Delhi	Akbarpur Majra	2 bigha 2 biswa	Delhi Waqf Board	1 km	No

14	North	Avantika Qabristan	Avantika, near DJB Pump House, Rohini Sector-1, Delhi	Avantika, Mangolpuri, Sultanpuri, Budh Vihar, Rohini, Khanjhawla, Pitamputa, Rithala, Shabad Dairy, Vijay Park, Kirari, Aman Vihar, Sultanpur Majra	12 bigha	MCD	10 km	Yes
15	North	Vishwas Nagar Qabristan	Khasra No. 816, Chandrawal, Delhi	Shiv Ram colony, Jhilmil, Vishwas Nagar, New Sanjay Colony, Singh Colony, Jagatpuri, Karkardooma Villlage	2 bigha	Delhi Waqf Board	3 km	No
16	North	Bakner Qabristan	Bakner Qabristan, Eidgah Road, Narela, Delhi	Bakner Village, Swatantra Nagar	20 bigha	Delhi Waqf Board	2 km	Yes
17	North West	Takya Azam Shah Qabristan	Bhadsha Koua, Eidgah Road, Qureshi Nagar, Delhi	Only for Qureshi community	5 bigha	Caste-based	15 km	No
18	North West	Qutab Garh Qabristan	Village Qutab Garh, Near MCD Public School, Narela, Delhi	Qutab Garh Village	1 bigha 14 biswa	Delhi Waqf Board	2 km	No
19	North West	Mugeshpur Qabristan	Mugeshpur Village, Bawana, Delhi	Mugeshpur Village	3 bigha 7 biswa	Delhi Waqf Board	2 km	Yes
20	North West	Singhola Muslim Qabristan	Village Singhola, Narela, Delhi	Village Singhola	6 bigha	Delhi Waqf Board	2 km	No
21	North West	Daryapur Kalan Qabristan	Khasra No. 104-105, Village Daryapur Kalan, Narela, Delhi	Village Daryapur Kalan	6 bigha 15 biswa	Delhi Waqf Board	1 km	Yes
22	North West	Tajpur Road Qabristan	Village Palla, Tajpur Road, Narela, Delhi	Palla Colony	500 gaz	Delhi Waqf Board	2 km	No
23	North West	Tajpur Qabristan	Tajpur Kalan, Narela, Delhi	Tajpur Village	5 bigha 1 biswa	Delhi Waqf Board	1 km	Yes
24	North West	Bakhtawarpur Tyagi Qabristan	Village Bakhtawarpur, Delhi	Only Tyagi caste	1 bigha	Delhi Waqf Board	5 km	Yes
25	North West	Bakhtawarpur Malik Qabristan	Village Bakhtawarpur, Delhi	Only for Malik community	1 bigha	Delhi Waqf Board	5 km	Yes
26	North West	Bakhtawarpur Pathan Qabristan	Village Bakhtawarpur, Delhi	Only Pathan community	1 bigha	Delhi Waqf Board	4 km	Yes
27	North West	Bakhtawarpur Malha Qabristan	Village Bakhtawarpur, Delhi	For Saifi community of Bakhtawarpur	800 gaz	Delhi Waqf Board	5 km	Yes
28	North West	Bakhtawarpur Alvi Fakeer Qabristan	Village Bakhtawarpur, Delhi	For Alvi community of Bakhtawarpur	2 bigha	Delhi Waqf Board	3 km	Yes
29	North West	Hiranki Qabristan	Hiranki Village Narela, Delhi	Hiranki Village	1 bigha 12 biswa	Community	1 km	No
30	North West	Inder Enclave Qabristan	Inder Enclave Phase II, Kirari Suleman, Delhi	Prem Nagar, Meet Nagar, Mubarkpur, Nangloi, Kakrola, Rohini Sectors 21, 22 etc.	7 bigha	Gram Sabha	5 km	No
31	North West	Sultanpur Qabristan	Sultanpur Majra Near Bus Stand Delhi	Sultanpur Majra, Sultanpuri	No Response	Government	No response	Yes

32	North West	Nithari village Qabristan	Nithari Village, Near MCD School, Delhi	Nithari Village	1 bigha	Community	1 km	Yes
33	North West	Lampur Village Qabristan	Lampur Village, Near Bakner Village, Narela, Delhi	No response	5 bigha	Delhi Waqf Board	3 km	Yes
34	North East	Ghonda Qabristan	Gali No-8, Near Markazi Masjid, Ghonda, Delhi	Ghonda	3 bigha 3 biswa	Personal (Haji Thao Masjid Saifi)	2 km	No
35	North East	Khajoori Qabristan	B-Block, Gali No.18, Shri Ram Colony Nagar, Khajoori, Delhi	Sherpur, Khajoori Khas, Sherpur Village	10 bigha	Community	5 km	No
36	North East	Nau Gaza Peer Qabristan	Opp. Nehru Vihar, Flyover Wazirabad, Delhi	Sangam Vihar, Wazirabad, Jagat puri, Timarpur	2 bigha	Delhi Waqf Board	4 km	Yes
37	North East	Alah Qabristan	Wazirabad Delhi	Sangam Vihar, Wazirabad, Jagat Puri, Timarpur	10 bigha 13 biswa	Delhi Waqf Board	4 km	No
38	North East	Qabristan Mustafabad	25 ft. Road Qabristan Mustafabad, Delhi	Chand bagh, Old Mustafabad, New Mustafabad, Nehru Vihar, Khajoori, Shiv Vihar, Chandu Nagar, Tukhmipur	20 bigha	Community	6 km	No
39	North East	Old Seemapuri Qabristan	J&K Block, Dilshad Garden, Delhi	Sourab Vihar, Jaitpur, Hari Nagar	12 bigha	DDA	3 km	No
40	North East	Tahirpur Qabristan	Gali No.4, Tahirpur Leprosy Complex, Delhi	Leprosy Colony	1 bigha	MCD	2 km	No
41	North East	Bihari Colony Qabristan	Road No. 51, Shalimar Park, Bihari Colony, Delhi	Kanti Nagar, Old Secretariat, Azad nagar, Krishna Nagar, Jhil Mil Colony, Jwala Nagar, Mukesh Nagar, Takiya, Bihari Colony	14 bigha 12 biswa	Delhi Waqf Board	5 km	No
42	North East	Faizal Muslim Qabristan	Sunder Nagri Delhi	Suder Nagri, Nand Nagri, Janta Flats, Harsh Vihar	5 bigha	No Reply	2 km	No
43	North East	Amar Colony Qabristan	Gali No.6, Amar Colony, Gokulpur Delhi	Amar Colony	500 gaz	No Reply	1 km	No
44	South	Kalu Qabristan	Village Kalu Sarai, Near IIT Delhi	Kalu Sarai, Begumpur, Malviya Nagar	2 bigha	Community	5 km	No
45	South	Daksinpuri Qabristan	Block No. 20, Daksinpuri, Ambedker Nagar, Delhi	Tigri, Dakshinpuri, Madangir, Devli, Tughlaqabad	5 bigha	Delhi Waqf Board	6 km	Yes
46	South	Chiragh Dilli Qabristan	Hazrat Dargah Chowk, Chiragh Dilli	Chiragh Dilli	200 gaz	Personal	1 km	No
47	South	Salahuddin Shaik Sarai Qabristan	Shaikh Sarai Village, Delhi	Chiragh Delhi, Shahpur Jat, Begampur	37 bigha	Delhi Waqf Board	3 km	No
48	South	Khirki Village Qabristan	Khirki Village, Backside DLF Mall, Saket, Delhi	Khirki village, Saket, Khirki extension, Rajiv Park, Gandhi Park, Hauz Rani, Malviya nagar	5 bigha 14 biswa	Delhi Waqf Board	7 km	No

49	South	Badarpur Qabristan	Mathura Road, Badarpur, Delhi	Badarpur, Mithapur, Molarband, Mohan Baba Nagar, Tajpur pahri, Aali Village and JJ Colony	3.5 bigha	Gram Sabha	5 km	No
50	South	DDA Park Qadimi Qabristan	Tughlakabad Village, Okhla Phases-I, Delhi	Sanjay Colony, Tughlaqabad, B. P. Singh Camp, Lal Kuan, Indra Camp	5 bigha	DDA	2 km	No
51	South	New Badarpur Qabristan	Near Shashi camp railway line, Old Mehrauli, Delhi	Badarpur	4.5 bigha	DDA	5 km	No
52	South	Prahladpur Qabristan	Prahladpur Village, Delhi	Prahladpur Village, Badarpur Village	8 bigha	Personal	3 km	Yes
53	South	Sangam vihar Qabristan	J-2/B, Gali No.2, Sangam Vihar, Delhi	Sangam Vihar	No Response	Government	5 km	Yes
54	South	Chandan Hulla Qabristan	Chandan Hulla, Near Punjab National Bank, Chhatarpur, Delhi	Chandan Hulla, Bhati Village, Fatahpur Gaon, Dara Village, Asola Village, Bhati Kala	4 bigha 15 biswa	Gram Sabha	5 km	No
55	South	Thao Haji Mohalla Qabristan	Thao Haji mohalla Near Aameen farm house, Chhatarpur, Delhi	Thao Haji mohalla	4 bigha	Irrigation Department	2 km	No
56	South	Sahoorpur Qabristan	Near Green Meadow Farm, Sahoorpur Extension, Chhatarpur, Delhi	Shahoorpur, Fathehpur	8 bigha	Village land	2 km	No
57	South	Ghitorni Qabristan	Near Tel. Depot, Ghitorni, Delhi	Ghitorni	600 gaz	Gram Sabha	1 km	Yes
58	South	Nau gaz peer baba Qabristan	M.G. Road, Near Water tank, Sultanpur, Delhi	Sultanpur, Ghitorni, Aaya Nagar	4 bigha 20 biswa	Delhi Waqf Board	4 km	Yes
59	South	Mandi Village Qabristan	Near M.C.D School, Mandi Village, Delhi	Mandi village	2.5 bigha	Gram Sabha	1 km	Yes
60	South	Satbari Village Qabristan	Near KGC Farm Gate No. 1, Satbari Village Delhi	Satbari village	17 bigha	Village Land	2 km	Yes
61	South	Bapu Camp Qabristan	Bapu Camp & Shambhu Colony Delhi	Shambu Colony, Bapu Camp, Bheem Colony, Shanti Colony, Jawahar Colony	10 bigha	Gram Sabha	2 km	No
62	South	Chhatarpur Qabristan	Behind Chhatarpur Mandir, Chhatarpur, Delhi	Chhattarpur	24 bigha	Village Land	2 km	No
63	South	Andheria Qabristan	Hazrat Makhdom Sammuddin, Andheria More, Mahrauli, Delhi	Makhdom Shah Colony	5 bigha	Delhi Waqf Board	1 km	No
64	South	Auliya Qabristan	Auliya Masjid, Mahrauli Delhi	Islam Colony, Auliya Colony, Safdarjung Hospital	4.5 bigha	Delhi Waqf Board	5 km	Yes
65	South	Chandan Hulla Qabristan	Village Chandan Hulla, Delhi	Chandan Hulla, Kalu Mohalla	2 bigha & biswa	Village land	2 km	No
66	South	Satbari kharak Qabristan	Near C.S.K.M Collage, New Satbari Kharak Village, Delhi	Kharak Village, Farm House	200 gaz	Gram Sabha	3 km	No

67	South	Ganj Shahida Qabristan	Ward No.2, Near Shahi Eidgah, Mehrauli New Delhi	Mehrauli, Aaya Nagar, Ghitorni, Safdarjang, Kapashera, Rajokri, Masoodpur, Kishangarh, TB Hospital	15 bigha	Delhi Waqf Board	10 km	No
68	South	District Park Qabristan	District Park, Hauz Khas, Delhi	R.K. Puram, Munirka, Mohammd Pur, Arjun Nagar, Safdarjang, Ber Sarai, Jia Sarai, Hauz Khas Village, Vasant Kunj	8 bigha	Delhi Waqf Board	10 km	No
69	South	Hauz Rani Qabristan	Near Max Hospital, Hauz Rani, Saket, Delhi	Hauz Rani	No Response	Delhi Waqf Board	3 km	Yes
70	South	Dargah Haji Sahab Qabristan	Ward No.7, Behind Jamali Kamali Masjid, Laddah Sarai, Mehrauli, Delhi	Mehrauli	5 bigha 1 biswa	Delhi Waqf Board	1 km	No
71	South East	Khidmat-e-khalaq Qabristan	Khidmat-e-khalaq Committee, D-1, Jaitpur Part-II	Sourav Vihar, Meethapur, Harsh Vihar, Ekta Vihar, Molarband, Basantpur	5 bigha	Personal	6 km	No
72	South East	Khadda Qabristan	Khadda Colony, Jaitpur Phase -II, Delhi	Khadda Colony, Vishwakarma Colony	2 bigha	Personal (Al-Baki)	3 km	Yes
73	South East	Sourab Vihar Qabristan	A Block Sourab Vihar, Jaitpur, Delhi	Sourab Vihar, Jaitpur, Hari Nagar	1.5 bigha	Community	3 km	No
74	South East	Hazrat Nizamuddin Qabristan	Hazrat Nizamuddin, Lajpat Rai Marg, Delhi	Lajpat Nagar, Jor Bagh, New Friends Colony, Tamour Nagar, Lodhi Colony, Defence Colony, Bhogal, Jangpura, Nehru Nagar, Ashram, Mahrani Bagh	50 bigha	Delhi Waqf Board	20 km	No
75	South East	Shaheen Bagh	Thokar No.6 Shaheen Bagh, Near Police Chowki, New Delhi	Under construction	7 bigha	Government	No response	Yes
76	South East	Batla House Qabristan	Near Jamia Millia Islamia, Batla House, Delhi	Zakir Nagar, Batla House, Joga Bai, Abul Fazal Enclave, Saheen Bagh, Okhla Village, Jasola, Mahbub Nagar, Johri Farm, Noor Nagar	60 bigha	Jamia Millia Islamia University, DWB	6 km	Yes
77	South West	Muslim Qabristan Sitapuri	Dabri Village, Near Sitapuri Extention, Delhi	Sitapuri, Dwarka, Dabri, Raghu Nagar, Durga Park, Sagarpur etc.	1 bigha	DDA	3 km	No
78	South West	Qabristan Dabri Village	Dabri Village, Delhi	Palam Village, Dwarka Sector 1, Delhi	No Response	Personal	No response	No
79	South West	Manglapuri Qabristan	Shah Nagar, Manglapuri chowk, Palam, Delhi	Palam Village, Dwarka Sector 1, Delhi	5 bigha	Delhi Waqf Board	5 km	No

80	South West	Najafgarh Qabristan	Dhansh Stand, Bharat Petrol Pump, Najafgarh, Delhi	Najafgarh, Haibatpur, Dharmapura, CRP Camp, Gopal Nagar, Krishna Colony, Nangli Dairy	15 bigha	Delhi Waqf Board	10 km	Yes
81	South West	Roshanpura Qabristan	New Roshanpura Near Shamshanghat, Najafgarh, Delhi	Swala Village, Roshanpura, Dinpur, Sutyra Vihar, Durga Vihar	10 bigha	Delhi Waqf Board	8 km	Yes
82	South West	Deenrpur Qabristan	Village Deenpur, Gurgaon Road, Najafgarh, Delhi	Village Deendarpur	12 bigha	Delhi Waqf Board	1 km	Yes
83	South West	SDMC Muslim Qabristan, Sector 24	Sector 24, Dwarka, Delhi	Bharat Vihar, Matyala Village, Bindapur, Rosanpura, Madhu Vihar, Samalkha, Kakrola More	10 bigha	SDMC	5 km	Yes
84	South West	Kangal Shah Qabristan	D.D.A Park, Bagh Mochi, Dhaula Kuan, Delhi	Kapashera, Delhi Cantt., RK Puram, Mohmandpur, Moti Bagh, Narayana, Chanakyapuri, Gol Market, Dhaula Kuan	5 bigha 5 biswa	Delhi Waqf Board	10 km	No
85	South West	Delhi Cantt. Qabristan	C.V.D line, Delhi Cantt, Delhi	Delhi Cantt., Sagarpur, Mayapuri, Naraina, Nagal Rai, Dhaula Kuan	5 acres	Delhi Cantt.	10 km	Yes
86	West	Nangloi Qabristan	Near Surajmal Stadium, Nangloi, Delhi	Nangloi, Nihal vihar, Bakkarwala, Sultampur, Mundka, Rajendar Park, Peeragarhi, Jwalapuri, Mangolpuri	5 bigha	DDA	5 km	No
87	West	Tihar Qabristan	Khasra No. 1575 Tihar village Shahpur Road, Delhi	Nangloi, Nihal vihar, Bakkarwala, Sultampur, Mundka, Rajendar Park, Peeragarhi, Jawalapuri, Mangolpuri	18 bigha	Delhi Waqf Board	5 km	Yes
88	West	Hastal Colony Qabristan	Near Eidgah, JJ Colony Hastal Vihar, Uttam Nagar, Delhi	Hastal Vihar, Pankha Road, Vikaspuri, Vikas Nagar, Bhagwati Vihar, Gulabi Bagh, Kali Basti, Mohan Garden, Dalmil Road, Om Vihar Phase 5, Shiv Vihar	20 bigha	Government	5 km	No
89	West	Mandipur Qabristan	Pocket-2, Madipur Village, Delhi	Rani Bagh, Rohini, Madipur, Paschim Vihar, Patel Nagar, Sadipur, Saku Basti, Kirti Nagar, Tri Nagar, Rampura, Peera garhi, Raghubir Nagar, Khyala, Mayapuri, Tilak Nagar, Punjabi Bagh	25 bigha	Community	20 km	No
90	West	Sawda Qabristan	JJ Colony Sawda, Ghevra, Delhi	Sawda, JJ Colony, Ghevra, Nizampur, Tikri	7.5 bigha	MCD	5 km	No

91	West	Khyala Qabristan	Raghubir Nagar Khyala Gaon, Near MCD School, Delhi	Khyala, Raghubir Nagar, Vishnugarden, TC Camp,	6 bigha	Gram Sabha	3 km	No
92	West	Vipin Garden Qabristan	Vipin Garden, Uttam Nagar, Delhi	Mohan Garden, Vikas Nagar, Vijay Vihar, Nangli Dairy, Arjun Park, Raja Ji Enclave, Vipin Garden, Sewa Park, Vikas Kunj, Sanik Enclave	10 bigha	Government	6 km	No
93	West	Tihar Vilalger Qabristan	Ajay Enclave, Ajanta Market, Shubhash Nagar, Delhi	Hari Nagar, Mayapuri, Tihar Village	4 bigha	Delhi Waqf Board	5 km	No
94	New Delhi	Qabristan Chamalian	7780 Gali Qabristan Chamalian, Rani Jhansi Road, Bada Hindu Rao, Delhi	Bada Hindu Rao, Inderlok, Sarai, Navab Ganj	19 bigha	Personal	10 km	Yes
95	New Delhi	Mahdiyan Qabristan	Dargah hazrat Imam Shahwali-ullah, Mollan Azad Medical College, Delhi	Lal Kuan, Kashmiri Gate, Jama Masjid, Nizamuddin, Chiti Qabar	5 acres	Government	10 km	No
96	New Delhi	Jadid Qabristan	Ahle Islam, Dilli Gate, Delhi	Jama Masjid, Kashmiri Gate, Old Delhi	40 acres	Government	10 km	No
97	New Delhi	Dawoodi Bohra Qabristan	Dilli Gate, Delhi	Jama Masjid, Kashmiri Gate, Old Delhi	No Response	Community	5 km	Yes
98	Central	Shidipura Qabristan	Anujuman wakil-e-quam Punjabiyan Qabristan, Near Shidipura Market, Old Delhi	Only for Punjabiyan community	5 bigha	Community	No Response	Yes
99	Central	Qabristan Anjuman Riyan	259, Malka Ganj Road, Delhi	Malka Ganj, Bada Hindu Rai, Beri Wala Bagh	9 bigha 8 biswa	Personal	3 km	Yes
100	Central	Baqi Balli Qabristan	Dargah Hazrat Khwaja Baqi Balli, Pharganj, Delhi	Lal Kuan, Kashmiri Gate, Jama Masjid, Nizamuddin	1800 gaz	Delhi Waqf Board	3 km	No
101	Central	Muslim Qabristan Nabi Karim	Nabi Karim, Delhi	Nabi Karim, Ballimaran,	13 bigha	Delhi Waqf Board	5 km	No
102	Shahdara	Qadimi Qabristan	Qadimi Qabristan Kardampuri Near gas Plant delhi	Kardampuri, Kabir Nagar, Yamuna Vihar, Vijay Park, Gokulpuri	22 bigha	Personal	3 km	Yes
103	Shahdara	Shasani Qabristan	Village Mandawli, Seva Tham Road, Delhi	Mandawli Village	10 bigha 2 biswa	Gram Sabha	1 km	No
104	Shahdara	Khera Qabristan	Mandawli Khera, Near Mandawli Extension, Sewa Dham Road, Delhi	Mandawli, Meet Nagar, Ashok Nagar, Nand Nagri	40 bigha	Community	1 km	No
105	Shahdara	Jyoti Colony Qabristan	Jyoti Colony, Wazirabad Road, Delhi	Jyoti Colony	5 bigha	MCD	2 km	Yes
106	East	Mulla Colony Qabristan	Ahley Noorani Anjuman, C-207, Harijan Basti, Mulla colony, Delhi	Mulla Collony, Kundli, New Kundli, Mayur Vihar Phase-3, Ghazipur, Dairy Farm, Abul Fazal Enclave	6 bigha	MCD	4 km	Yes

107	East	Quadeem Muslim Graveyard	Kotla Village, Mayur vihar phase-I, Delhi	Kotla Village, Mayur Vihar Phase 1, Jawahar Mohalla, Patparganj, Trilokpuri, Kalyanpuri, Khichdipur, New Ashok Nagar	3 acre 19 biswa	Delhi Waqf Board	4 km	No
108	East	Qadimi Qabristan	Khichipur, Mandawali Fazalpur, Mayur Vihar Phase-II	Mandawali, Fazalpur, Josi Colony, IP Extension, Madhu Vihar, Chander Vihar, Khichdipur, Railway Colony, Vinod Nagar, Mayur Vihar Phase-II	2 bigha 5 biswa	Delhi Waqf Board	3 km	No
109	East	Masjid Madarsa Qabristan	Masjid Madarsa Qabristan Patparganj, Mayur Vihar Phase I	Pandav Nagar, Patparganj, Mayur Vihar Phase 1, Kotla, Ganesh Nagar, Acharya Niketan	7 bigha	Delhi Waqf Board	3 km	No
110	East	Qadeem Qabristan	Qadeem Qabristan Near Gautam public School, Gharoli	Village Gharoli (only for Saiefi family)	3 bigha	Personal	1 km	Yes
111	East	Buland Masjid Qabristan	Bhrastachar Nirodhak Samiti, Buland Masjid, Shastri park, Near Servoday Bal Vidya School	Kailash Nagar, Buland masjid, Shastri Park, Jain Mandir, Chand masjid, Pusta 1 to 5, Usmanpur, Ghandi nagar, Chander puri, ISBT New Usmanpur	1 acre	MCD	5 km	No
112	East	New Seemapuri Qabristan	Jannat-e-Bahar Qabristan, F-Block, New Seemapuri, Delhi	New Seemapuri, Dilshad Colony, DDA Quarters	5 bigha	MCD	3 km	Yes
113	East	Welcome Qabristan	Welcome, Seelampur, Delhi	Seelampur, Jafrabad, Chauhan Bangar, Maujpur, Shastri Nagar, Weelcome Colony	5 bigha	Delhi Waqf Board	7 km	No
114	East	Kotla village	Near Shivji Mandir, Kotla Village, Mayur Vihar Phase I	Khichripur, Chand Cinema, Kotla, Trilokpuri, Kalyanpuri, Shashi Garden, Super Bazar, Mayur Vihar Phase 2	7 bigha	Delhi Waqf Board	3 km	Yes
115	Shahdara	Kirad Qabristan	Budh Bazar Bank Colony, Mandawli, Delhi	Mandawli, Rajiv Nagar, Harsh Vihar, Bank Colony, Budh Vihar	7 bigha	Delhi Waqf Board	2 km	Yes

Appendix 2

EXISTING FACILITIES, FUTURE PLANS, CHARGES, CAPACITIES & VACANCIES IN FUNCTIONAL GRAVEYARDS

S. No.	District	Name of graveyards	Existing facilities available	Future plan of action for development, as shared by respondents	Charges (in Rs.)	Capacity	Vacancy
1	North	Qadimi Qabristan Madina Masjid	Boundary wall, street lights, security guard, space for <i>namaz-e-janaza</i> (funeral prayer) and water tank/bore well	Employee for maintenance of graveyard, which should be appointed by MCD.	350	1000	70
2	North	Muslim Qadimi Qabristan	Space for <i>namaz-e-janaza</i> , and water tank/bore well	Boundary wall, sewer line and security guard	300-500	1000	500
3	North	Muslim Graveyard	Water tank/bore well	No response	500	500	150
4	North	Kheda kala Qabristan	No facility available	Space for <i>namaz-e-janaza</i> , boundary wall, water tank/bore well and street light	0	700	100
5	North	Holambi Kalan Qabristan	No facility available	Boundary wall, street light and security guard	0	70	45
6	North	Alipur Qabristan	Boundary wall	Space for <i>namaz-e-janaza</i> , water tank/bore well, street light, security guard and room for guard	0	4000	3500
7	North	Mamoorpur Qabristan	No facility available	Boundary wall, road, land filling and plantation	0	2500	1500
8	North	Khuraini Qabristan	No facility available	No response	0	1000	400
9	North	Razapur Qabristan	Boundary Wall	Two rooms for care taker, land filling, water bore well and security guard	0	500	200
10	North	Nangal Thakran Qabristan	Boundary wall	Water tank/bore well, street light	0	200	230
11	North	Nangal Thakran Qabristan	No facility available	Boundary wall, water tank/bore well, Street light and extend the area of graveyard	0	100	90
12	North	Bawana Qabristan	No facility available	Boundary wall and naawaz-e- janaza	0	250	0
13	North	Akbarpur Qabristan	Boundary Wall	Water tank/bore well, street light and land clearing	0	100	0
14	North	Avantika Qabristan	Boundary wall	Street lights, land filling, repairing of toilet and boundary wall	1000	1500	60
15	North	Vishwas Nagar Qabristan	Boundary wall	Reconstruction of boundary wall, security guard and street light	300	150	4
16	North	Bakner Qabristan	Boundary wall and Space for <i>namaz-e-Janaza</i>	No response	0	2000	1800
17	North West	Takya Azam Shah Qabristan	Boundary wall and street light	Naawaz-e- janaza	2300	500	0
18	North West	Qutab Garh Qabristan	Boundary wall	No response	0	150	0

19	North West	Mughespur Qabristan	No facility available	Road, boundary wall, water tank/bore well and street light	0	300	150
20	North West	Singhola Muslim Qabristan	No facility available	Namaz-e-janaza, boundary wall, water tank/bore well and street light	No response	No response	No response
21	North West	Daryapur Kalan Qabristan	No facility available	Boundary wall, water tank/bore well and land clearing	0	600	550
22	North West	Tajpur Road Qabristan	Boundary wall	Two rooms for guard and street light	0	50	50
23	North West	Tajpur Qabristan	No facility available	Boundary wall, land clearing	0	600	500
24	North West	Bakhtawarpur Tyagi Qabristan	No facility available	Boundary wall, water tank/bore well and street light	0	150	150
25	North West	Bakhtawarpur Malik Qabristan	No facility available	Boundary wall, water tank/bore well and street light	0	150	0
26	North West	Bakhtawarpur Pathan Qabristan	No facility available	Boundary wall and street light	0	150	150
27	North West	Bakhtawarpur Malha Qabristan	No facility available	Boundary wall, street light and security guard	0	150	150
28	North West	Bakhtawarpur Alvi Fakeer Qabristan	No facility available	Boundary wall, water tank/bore well and street light	0	250	300
29	North West	Hiranki Qabristan	No facility available	Boundary wall, street light and expansion of graveyard area	0	150	0
30	North West	Inder Enclave Qabristan	Boundary wall, street light, namaz- e- janaza and bore well	Expansion of graveyard area, two room for guard and land filling	100	600	120
31	North West	Sultanpur Qabristan	Boundary	No Response	No response	No response	No response
32	North West	Nithari village Qabristan	No facility available	Extend the area of graveyard, boundary wall, bore well, street light, entry gate and land filling	0	100	0
33	North West	Lampur Village Qabristan	Boundary wall	No response	No response	No response	No response
34	North East	Ghonda Qabristan	Boundary wall and guard	Street light, expansion of graveyard area, shed	500	300	0
35	North East	Khajoori Qabristan	Boundry Wall	Entry gate and passage for water	1000	3000	3000
36	North East	Nau Gaza Peer Qabristan	No facility available	Boundary wall, water tank and street lights	0	1500	0
37	North East	Alah Qabristan	No facility available	Boundary wall, water tank, street lights and land clearing	0	5000	No Response
38	North East	Qabristan Mustafabad	Boundary wall and water bore well	Street light	300	5000	0
39	North East	Old Seemapuri Qabristan	Boundary wall and water tank and street light are not available.	Street light	800	1000	50
40	North East	Tahirpur Qabristan	Boundary wall	Bore well, street light, security guard, land filling and expansion of graveyard land	100	130	0
41	North East	Bihari Colony Qabristan	Boundary wall, Street light	Land filling	500	1500	200
42	North East	Faizal Muslim Qabristan	Boundary wall, street lights and security guard	No response	600-800	No response	No Response
43	North East	Amar Colony Qabristan	No facility available	No response	No response	No response	No response

44	South	Kalu Qabristan	Boundary wall	Expansion of graveyard land by freeing encroached area	300-400	250	0
45	South	Daksinpuri Qabristan	Boundary wall and guard	Expansion of graveyard land and land filling	500	400	0
46	South	Chirang Delhi Qabristan	No facility available	No Response	0	15	0
47	South	Salahuddin Shaik Sarai Qabristan	Boundary wall, <i>namaz-e-janaza</i>	Security guard and street light	0	5500	3000
48	South	Khirki Village Qabristan	Boundary wall, street lights and security guard	CCTV camera	500	500	0
49	South	Badarpur Qabristan	Boundary wall	Street light, guard and room for guard	0	190	0
50	South	DDA Park Qadimi Qabristan	No facility available	Boundary wall, room for guard and street light and Expansion of graveyard land	0	600	0
51	South	New Badarpur Qabristan	Boundary wall and water tank	<i>Namaz-e-janaza</i> , bore well, street light, room for guard, footpath and land clearing	0	600	200
52	South	Prahladpur Qabristan	No facility available	No response	No response	No response	No response
53	South	Sangam vihar Qabristan	Boundary Wall	No response	No response	No response	No response
54	south	Chandan Hulla Qabristan	Boundary wall, street lights and space for <i>namaz-e-janaza</i>	Land filling, water borewell and footpath with shed	0	500	250
55	South	Thao Haji mohalla Qabristan	Boundary wall and street light	Land filling	0	600	250
56	South	Sahoorpur Qabristan	Boundary wall	Street light, water tank, land filling and expend the land of graveyard.	0	80	40
57	South	Ghitorni Qabristan	Boundary wall	Expansion of graveyard land, street light, water tank, footpath and land filling	0	150	15
58	South	Nau gaz peer baba Qabristan	Boundary wall and street light	Increase in length of boundary wall, guard, room and footpath	0	500	20
59	South	Mandi Village Qabristan	No facility available	Boundary wall, entry gate, water tank, <i>naamaz-e-janaza</i> and footpath	0	300	100
60	South	Satbari Village Qabristan	Boundary wall is available.	Street light, entry gate, footpath and plantation	0	2000	1000
61	South	Bapu Camp Qabristan	No facility available	Boundary wall, street light, security guard, water tank, entry gate and footpath	0	1500	500
62	South	Chhatarpur Qabristan	Boundary wall and guard	Street light, footpath	No response	No response	No Response
63	South	Andheria Qabristan	No facility available	Boundary wall, street light, room for guard, entry gate, footpath and land filling	0	600	0
64	South	Auliya Qabristan	Boundary wall, street lights, space for <i>namaz-e-janaza</i> and water tank	Footpath with shed and land filling	2100	500	350
65	South	Chandan Hulla Qabristan		Boundary wall, street light, water tank and space for <i>namaz-e-janaza</i>	0	190	0

66	South	Satbari kharak Qabristan	No facility available	Boundary wall, street light, water tank, electricity, security guard, footpath with shed, space for namaz-e-janaza & expansion of graveyard land	0	80	15
67	South	Ganj Shahida Qabristan	No facility available	Boundary wall, street light, main gate, security guard, room for guard, footpath with shed and ambulance	0	2500	30
68	South	District Park Qabristan	No facility available	Boundary wall, street light, water tank/ borewell, entry gate, security guard, room for guard, footpath with shed and space for <i>namaz-e-janaza</i>	0	800	500
69	South	Hauz Rani Qabristan	No facility available	No response	0	No response	No response
70	South	Dargah Haji Sahab Qabristan	Boundary wall	Street light, bore-well, entry gate, main road, security guard, room for guard, space for <i>namaz-e-janaza</i> and land filling	3000	600	0
71	South East	Khidmat-e-Khalq Qabristan	Boundary wall	Space for <i>namaz-e-janaza</i> , bore well, street light, security guard and land filling	0	600	200
72	South East	Khadda Qabristan	No facility available	Boundary wall, space for <i>namaz-e-janaza</i> , water bore well, street light and footpath	0	135	6
73	South East	Sourab Vihar Qabristan	Boundary Wall	Street light, security guard and expansion of graveyard land	0	180	25
74	South East	Hazrat Nizamuddin Qabristan	Boundary wall and water tank	Street light, footpath, guard and land filling	1500	8000	0
75	South East	Shaheen Bagh	Boundary wall	No response	0	0	No response
76	South East	Batla house Qabristan	No facility available	No response	0	No response	No response
77	South West	Muslim Qabristan Sitapuri	Boundary wall, street light and security guard	Expansion of graveyard area and water tank	0	100	No response
78	South West	Qabristan Dabri Village	Boundary wall and caretaker	No response	No response	No response	No response
79	South West	Manglapuri Qabristan	Boundary wall, street lights, water tank and <i>namaz-e-janaza</i>	Room for guard, footpath and entry gate	1500	800	150
80	South West	Najafgarh Qabristan	No facility available	Boundary wall, water bore well, street lights, <i>namaz-e-janaza</i> , room for security guard and land clearing	No response	No response	No Response
81	South West	Roshanpura Qabristan	Boundary wall, street lights, water tank, <i>namaz-e-janaza</i> and security guard	Street light and room for caretaker	0	12000	150
82	South West	Deenrpur Qabristan	Boundary wall and space for <i>namaz-e-janaza</i>	Water tank, digging equipment and room for caretaker	0	1300	700
83	South West	SDMC Muslim Qabristan, Sector 24	Boundary wall, street lights and space for <i>namaz-e-janaza</i>	Electricity, water tank, security guard, sewer line	200-300	2000	1000

84	South West	Kangal Shah Qabristan	No facility available	Boundary wall, street light, water tank, security, room for guard, footpath with shed and land filling	0	600	250
85	South West	Delhi Cantt. Qabristan	Boundary wall, street lights, water tank and space for namaz-e-janaza	Committee wants legally ownership of graveyard	500	3500	500
86	West	Nangloi Qabristan	Boundary wall	Street light, room for guard and entry gate	300	800	0
87	West	Tihar Qabristan	Boundary wall, street lights and security guard	No response	0	5000	0
88	West	Hastal Colony Qabristan	Boundary wall, water tank and space for namaz-e-janaza	Street light and expansion of graveyard area	600	2500	250
89	West	Mandipur Qabristan	No facility available	Boundary wall, entry gate, street light, security guard and land filling	300-1200	3500	0
90	West	Sawda Qabristan	No facility available	Boundary wall, room for guard and street light	0	1500	200
91	West	Khyala Qabristan	Boundary wall is under construction	Expansion of graveyard area and land filling	0	700	0
92	West	Vipin Garden Qabristan	No facility available	Boundary wall, water bore well, street lights, namaz-e-janaza and room for security guard	500	2000	0
93	West	Tihar Vilalger Qabristan	Boundary wall and namaz-e-janaza	No response	No response	500	300
94	New Delhi	Qabristan Chamalian	Boundary wall, street light and security guard	No response	1500-2000	2500	0
95	New Delhi	Mahdian Qabristan	No facility available	Boundary wall	5000	1500	200
96	New Delhi	Jadid Qabristan	Boundary wall, street lights and security guard	More street lights and CCTV camera	1500	2000	0
97	New Delhi	Dawoodi Bohra Qabristan	Boundary wall, street lights, water bore well and space for namaz-e-janaza	No response	No response	No response	No Response
98	Central	Shidipura Qabristan	Boundary wall, street lights, bore well and space for namaz-e-janaza	None	1000	No response	No Response
99	Central	Qabristan Anjuman Riyan	Boundary wall, street lights, space for namaz-e-janaza, water tank/bore well	No response	1000	1000	400
100	Central	Baqi Balli Qabristan	Boundary wall, street lights and security guard	CCTV camera	8000	150	0
101	Central	Muslim Qabristan Nabi Karim	No facility available	Boundary wall	1000	250	0
102	Shahdara	Qadimi Qabristan	No facility available	Boundary wall and land filling	200	6000	2000
103	Shahdara	Shasani Qabristan	No facility available	Bore well, street light, entry gate and land clearing	0	1500	10
104	Shahdara	Khera Qabristan	No facility available	Boundary wall, water bore well, street light and namaz-e-janaza	0	2500	700
105	Shahdara	Jyoti Colony Qabristan	Boundary wall and namaz-e-janaza	Land clearing and construct a mosque	0	700	100
106	East	Mulla colony Qabristan	Boundary wall, water bore well and security guard	Land clearing and land filling	500	500	100

107	East	Quadeem Muslim Graveyard	Boundary wall, street lights and security guard	Store room	400	1200	0
108	East	Qadimi Qabristan	Boundary wall, street lights, water bore well and <i>namaz-e-janaza</i>	No response	500	500	200
109	East	Masjid Madarsa Qabristan	Boundary wall and street lights	Water bore well, security guard	0	600	590
110	East	Qadeem Qabristan	Boundary wall	No response	0	200	150
111	East	Buland Masjid Qabristan	Boundary wall	Relocate to other area	0	600	300
112	East	New Seemapuri Qabristan	Boundary wall and space for <i>namaz-e-janaza</i>	Bore well, street light and entry gate	900	700	200
113	East	Welcome Qabristan	Boundary wall and street lights (street lights are not working)	Land clearing	600	1000	100
114	East	Kotla village	No facility available	No response	No response	No response	No response
115	Shahdara	Kirad Qabristan	Boundary wall and <i>namaz-e-janaza</i>	Street light, security guard, water tank and CCTV camera	0	2500	300

Appendix 3

LIST OF NON-FUNCTIONAL GRAVEYARDS

S. No.	District	Name of graveyard	Address of graveyard	Reason for non-functional status, as shared by respondents
1	North	Muslim Qabristan	Khybar Pass , Civil Line, Near petrol pump, Delhi	A <i>peer mazar</i> and a temple were constructed on the same ground. Since these are structures of religious significance, people have stopped using the land as graveyard.
2	North West	Punjab Khor Qabristan	Village Punjab Khor, Near Qutab Garh, Narela, Delhi	Conflict between two religious communities
3	North West	Palla Qabristan	Village Palla, Near Hanuman Mandir, Narela, Delhi	No reply
4	South	Begumpur Qabristan	Sarai Shahji, Near Begumpur Malviya Nagar, Shapur Jat, Delhi	Land is encroached by the Archaeological Survey of India (ASI)
5	South	Pukhta Baoli	Khirki Village, Backside DLF Mall, Saket, Delhi	Since Mosque has been constructed on graveyard land, people have stopped using it as graveyard.
6	South	Picnic Ghat Qabristan	Opp. Airforce Station, Tughlakabad, Delhi	Land has been encroached by Delhi development Authority (DDA)
7	South	Ladda Sarai Qabristan	Behind Razia Sultan Baoli, Ladda Sarai, Mahrauli, Delhi	As the graveyard is located in an inhabited colony, people are not allowed to use the graveyard.
8	South	Muslim Qabristan	Rangpuri Pahri, Sultan Ghari, Near D Block Vasant Kunj, Delhi	Land has been encroached by ASI and DDA
9	South	Laddah Sarai Qabristan	Laddah Sarai, Mehrauli, Delhi	Legal dispute between DDA and DWB
10	South	Graveyard	Meer Khusro <i>Peer</i> , Mathura Road, Hazrat Nizamuddin, Delhi	Land is encroached by DDA and local community
11	South	Dargah Masjid	Dargah Masjid, Khirki Village, Saket, Delhi	Reason not specified
12	South West	Goyla Dairy Qabristan	Goyla Dairy, Dwarka, Delhi	No space vacant
13	South West	Rawta Qabristan	Rawta village, Najafgarh, Delhi	Reason not specified
14	West	Muslim Qabristan	Mubarakpur Delhi	Graveyard land has become a pond, and people use it for fishery
15	Central	Civil Line Qabristan	Near St. Xavier's Senior Secondary School, Civil Line, Delhi	Legal dispute between DDA and DWB
16	Central	Muslim Qabristan	Timarpur, Khasra No. 121, Civil lines	Legal dispute (parties to dispute not known)

Appendix 4

LIST OF GRAVEYARDS LOCATED IN INHABITED COLONIES

S. No.	District	Name of Graveyard	Address of Graveyard	Type of Graveyard	Ownership of Graveyard	Status of Graveyard
1	East	Qadimi Qabristan Inayati Masjid	Khichripur, Mayur Vihar Phase-II, Delhi	Only land	Delhi Waqf Board	Functional
2	East	Quadeem Qabristan	Kotla Village, Near Eidgah, Mayur Vihar Phase-I, Delhi	Only land	Delhi Waqf Board	Functional
3	East	Qabristan Patparganj	Masjid Madarsa Qabristan, Patparganj, Mayur vihar Phase-1, Delhi	Only land	Delhi Waqf Board	Functional
4	East	New Seemapuri Qabristan	Jannat-e-Bahar Qabristan, F-Block, New Seemapuri, Delhi	Only land	MCD	Functional
5	North	Holambi Kalan Qabristan	Holambi Kalan, Delhi	Peer	Delhi Waqf Board	Functional
6	North	Khuraini Qabristan	Khuraini Qabristan, Near Khuraini Masjid, Narela, Delhi	Only land	Community	Functional
7	North	Bakner Qabristan	Bakner Qabristan, Eidgah Road, Narela, Delhi	Eidgah	Delhi Waqf Board	Functional
8	North	Nangal Thakran Qabristan	Khasra No. 4/23, Village Nangal Thakran, Narela, Delhi	Only land	Personal	Functional
9	North	Nangal Thakran Qabristan	Khasra No. 4/12, Village Nangal Thakran, Narela, Delhi	Only land	Personal	Functional
10	North	Akbarpur Qabristan	Village Akbarpur Majra, Near Madena Masjid, Narela, Delhi	Only land	Delhi Waqf Board	Functional
11	North	Muslim Graveyard	Khybar Pass Civil line, Near Petrol Pump, Delhi	Peer or Mazar	Delhi Waqf Board	Non-functional
12	North	Vishwas Nagar Qabristan	Khasra No. 816, Chandrawal, Delhi	Only land	Delhi Waqf Board	Functional
13	North East	Ghonda Qabristan	Gali No-8, Ghonda, Near Markazi Masjid, Delhi	Only land	Personal (Haji Thao Masjid Saifi)	Functional
14	North East	Khajoori Qabristan	B-Block, Gali No.18, Shri Ram Colony Nagar, Khajoori, Delhi	Only land	Community	Functional
15	North East	Alah Qabristan	Wazirabad, Delhi	Only land	Delhi Waqf Board	Functional
16	North East	Qabristan Mustafabad	25 ft. Road, Qabristan Mustafabad, Delhi	Eidgah	Community	Functional
17	North East	Amar Colony Qabristan	Gali No.6, Amar Colony, Gokulpur Delhi	Only land	No Reply	Functional
18	North East	Tahirpur Qabristan	Tahirpur Delhi	Only land	MCD	Functional
19	North West	Qutab Garh Qabristan	Village Qutab Garh, Near MCD School, Narela, Delhi	In vicinity of mosque	Delhi Waqf Board	Functional
20	North West	Singhola Muslim Qabristan	Village Singhola, Narela, Delhi	Only land	Delhi Waqf Board	Functional
21	North West	Bakhtawarpur Malha Qabristan	Village Bakhtawarpur, Delhi	Only land	Delhi Waqf Board	Functional
22	North West	Qabristan Lampur Village	Lampur Village, Bankner Village, Narela, Delhi	Only land	Delhi Waqf Board	Functional
23	South	Begumpur Qabristan	Sarai Shah Ji, Near Begumpur, Malviya Nagar, Shapur Jat, Delhi	Only land	Delhi Waqf Board	Non functional
24	South	Daksinpuri Qabristan	Block No. 20, Daksinpuri, Ambedker Nagar, Delhi	Only land	Delhi Waqf Board	Functional
25	South	Chirang Delhi Qabristan	Hazrat Dargah Chowk, Chiragh Dilli	Only land	Personal	Functional
26	South	Salahuddin Shaik Sarai Qabristan	Shaik Sarai Village, Delhi	Only land	Delhi Waqf Board	Functional
27	South	Picnic Ghat Qabristan	Opp. Airforce Station, Tughlakabad, Delhi	Only land	Village land	Non functional

28	South	Thao Haji mohalla Qabristan	Thao Haji mohalla, Near Aameen Farm House , Chhatarpur, Delhi	Only land	Irregation Department	Functional
29	South	Ghitorni Qabristan	Near Tel Depo, Ghitorni, Delhi	Only land	Gram Sabha	Functional
30	South	Chhatarpur Qabristan	Behind Chhatarpur Mandir, Chhatarpur, Delhi	Only land	Village land	Functional
31	South	Qabristan Ladda Sarai	Behind Razia sultan Baoli, Mahrauli, Delhi	Only land	Government	Non functional
32	South	Andheria Qabristan	Hazrat Makhdom Sammuiddin, Andheria More, Mahrauli, Delhi	In vicinity of mosque	Delhi Waqf Board	Functional
33	South	Rangpuri Qabristan	Rangpuri , Sultan Ghari, Near Vasant Kunj, D.Block, Delhi	Only land	Delhi Waqf Board	Non functional
34	South East	Sourab Vihar Qabristan	A Block Sourab Vihar, Jaitpur, Delhi	Only land	Community	Functional
35	South East	Batla house Qabristan	Near Jamia Millia Islamia, Batla House, Delhi	Only land	JMI, DWB	Functional
36	West	Tihar Qabristan	Khasra No. 1575 Tihar village Shahpur Road, Delhi	Only land	Delhi Waqf Board	Functional
37	West	Khyala Qabristan	Raghubir Nagar, Khyala Gaon, Near MCD School, Delhi	Only land	Gram Sabha	Functional
38	South West	Muslim Qabristan Sitapuri	Dabri Village, Near Sitapuri Extension, Delhi	Only land	DDA	Functional
39	South West	Qabristan Dabri Village	Dabri Village, Delhi	Only land	Personal	Functional
40	South West	Roshanpura Qabristan	New Roshanpura, Near Shamshanghat, Najafgarh, Delhi	In vicinity of mosque	Delhi Waqf Board	Functional
41	Central	Baqi Balli Qabristan	Dargah Hazrat khwaja Baqi Balli, Pharganj, Delhi	Peer and Mosque	Delhi Waqf Board	Functional
42	Central	Muslim Qabristan Nabi Karim	Nabi Karim, Delhi	Peer and Mosque	Delhi Waqf Board	Functional
43	New Delhi	Chamalian Qabristan	7780 Gali, Rani Jhansi Road, Bada Hindu Rao, Delhi	Only land	Personal	Functional
44	New Delhi	Mahdiyan Qabristan	Dargah Hazrat Imam Shah Waliullah, Maulana Azad Medical College, Delhi	Peer and Mosque	Government	Functional
45	Shahdara	Khera Qabristan	Mandawli Khera, Near Mandawli Extension, Sewa Dham Road, Delhi	Only land	Community	Functional
46	Shahdara	Kirad Qabristan	Budh Bazar, Bank colony, Mandawli, Delhi	In vicinity of mosque	Delhi Waqf Board	Functional

Appendix 5

LIST OF ENCROACHED GRAVEYARDS

S. No.	District	Graveyard Name	Address of Graveyard	Encroached Area	Name of Encroacher
1	North	Qadimi Qabristan Madina Masjid	Mukarba Chowk, GTK Road Bypass, Delhi	1 acre	ASI, PWD
2	North	Muslim Qadimi Qabristan	Khasra No. 6061, Azadpur Village, Near Azadpur Flyover, Delhi	4.5 bigha	Local community
3	North	Muslim Graveyard	6/27 Samaipur, Delhi	No reply	Local community
4	North	Kheda kala Qabristan	Garhi Colony, Khera Khurd, Delhi	No reply	Local community
5	North	Holambi Kalan Qabristan	Holambi Kalan, Delhi	1.5 bigha	Local community
6	North	Alipur Qabristan	Village Alipur, Narela Road, Delhi	No reply	Local community
7	North	Mamoorpur Qabristan	Village Paana Mamoorpur, Near ML School, Narela, Delhi	4 bigha	Local community
8	North	Khuraini Qabristan	Khuraini Qabristan, Near Khuraini Masjid, Narela, Delhi	No reply	Local community
9	North	Razapur Qabristan	Bhorgarh, Narela, Delhi	1 bigha	DSIIDC
10	North	Bawana Qabristan	Village Bawana, Near Gramin Gaushala (cowshed), Delhi	1.5 bigha	Political leader
11	North	Muslim Qabristan	Khybar pass Civil line, Near Petrol Pump, Delhi	1 bigha	Temple
12	North West	Takya Azam Shah Qabristan	Bhadsha Koua, Eidgah Road, Qureshi Nagar, Delhi	300 gaz	Local community
13	North West	Daryapur Kalan Qabristan	Khasra No. 104-105, Village Daryapur Kalan, Narela, Delhi	1 acre	Temple
14	North West	Tajpur Road Qabristan	Village Palla, Tajpur Road, Narela, Delhi	500 gaz	Police station
15	North West	Bakhtawarpur Malha Qabristan	Village Bakhtawarpur, Delhi	300 gaz	Local community
16	North West	Inder Enclave Qabristan	Inder Enclave Phase II, Kirari Suleman, Delhi	30 gaz	Temple
17	North East	Nau Gaza Peer Qabristan	Opp. Nehru Vihar, Wazirabad Flyover, Delhi	200 gaz	Local community
18	North East	Qabristan Mustafabad	25 ft. Road, Qabristan Mustafabad, Delhi	3.5 bigha	Local community
19	South	Kalu Qabristan	Village Kalu Sarai, Near IIT, Delhi	No reply	Azad Apartments
20	South	Chiragh Dilli Qabristan	Hazrat Dargah Chowk, Chiragh Dilli	No reply	Local community
21	South	Badarpur Qabristan	Mathura Road Badarpur, Delhi	1 bigha	Local community
22	South	Nau gaz peer baba Qabristan	M.G Road, Near Water Tank, Sultanpur, Delhi	3 bigha	Delhi Jal Board
23	South	Mandi Village Qabristan	Near M.C.D School, Mandi Village, Delhi	500 gaz	Local community
24	South	Andheria Qabristan	Hazrat Makhdum Sammuddin, Andheria More, Mahrauli, Delhi	1 bigha	DDA
25	South	Muslim Qabristan	Rangpuri pahri, Sultan Ghari Near D.Block Vasant Kunj, Delhi	50 bigha	DDA
26	South	Ladda Sarai Qabristan	Behind Razia Sultan Baoli, Ladda Sarai, Mahrauli, Delhi	No reply	DDA
27	South	Begumpur Qabristan	Sarai Shah Ji Near Begumpur Malviya Nagar, Shapur Jat, Delhi	No reply	Local community
28	South	Picnik Ghat Qabristan	Opp. Airforce Station, Tuglakabad, Delhi	10 bigha	DDA
29	South	District Park Qabristan	District Park, Hauz Khas, Delhi	No reply	DDA
30	South East	Hazrat Nizamuddin Qabristan	Hazrat Nizamuddin, Lajpat Rai Marg, Delhi	1 bigha	Community welfare society
31	Sout East	Batla House Qabristan	Near Jamia Millia Islamia, Batla House, Delhi	No reply	Local community
32	South West	Rawta Qabristan	Rawta Village, Najafgarh, Delhi	No reply	No reply
33	West	Tihar Qabristan	Khasra No. 1575, Tihar village Shahpur Road, Delhi	18 bigha	Local community

34	West	Khyala Qabristan	Raghubir Nagar, Khyala Gaon, Near MCD School, Delhi	1.5 bigha	Political leader
35	New Delhi	Qabristan Chamalian	7780 Gali Qabristan, Chamalian, Rani Jhansi Road, Bada Hindu Rao, Delhi	No reply	Local Community
36	New Delhi	Dawoodi Bohra Qabristan	Dilli Gate, Delhi	No reply	No reply
37	Central	Qabristan Anjuman Riyan	259, Malka Ganj Road, Delhi	113 bigha	Local community
38	Central	Muslim Qabristan	Nabi Karim, Delhi	13 bigha	Local community
39	Shahdara	Shasani Qabristan	Village Mandawli, Seva Tham Road, Delhi	7 bigha	Local community
40	East	Quadeem Muslim Graveyard	Kotla village, Mayur Vihar Phase-I, Delhi	No reply	Local community
41	East	Masjid Madarsa Qabristan	Masjid Madarsa Qabristan, Patparganj, Mayur Vihar I, Delhi	No reply	Local community
42	East	Qadeem Qabristan	Qadeem Qabristan, Near Gautam Public School, Gharoli, Delhi	15 bigha	DDA
43	Shahdara	Kirad Qabristan	Budh Bazar, Bank colony, Mandawli, Delhi	40 bigha	Temple committee

Appendix 6

CONSOLIDATED LIST OF ALL FUNCTIONAL, NON-FUNCTIONAL & NON-TRACEABLE GRAVEYARDS

S. No.	Name of Property	Property Code	Address of Graveyard	Status of Graveyard
Graveyards owned by Delhi Waqf Board (DWB)				
1	Muslim Graveyard	DL231308-GY001	-	Non-traceable
2	Muslim Graveyard	DL251570-GY001	Vill. Roshanpura, Najafgarh Circle, New Delhi	Functional
3	Muslim Graveyard	DL281827-GY001	Vill. Ghondli, Circle Shahdara, Delhi	Non-traceable
4	Muslim Graveyard	DL231309-GY001	-	Non-traceable
5	Muslim Graveyard	DL251571-GY001	Vill. Roshanpura, Najafgarh Circle, New Delhi	Non-traceable
6	Muslim Graveyard	DL281828-GY001	Vill. Ghondli, Circle Shahdara, Delhi.	Non-traceable
7	Muslim Graveyard	DL251572-GY001	Village Roshanpura, Najafgarh Circle, Delhi.	Non-traceable
8	Muslim Graveyard	DL281829-GY001	Vill. Ghondli, Circle Shahdara, Delhi	Non-traceable
9	Muslim Graveyard	DL281830-GY001	Vill. Ghonda, Circle Shahdara, Delhi	Functional/Personal
10	Muslim Graveyard	DL211061-GY001	Village Okhla, New Delhi	Non-traceable
11	Muslim Graveyard	DL281832-GY001	Patpar Ganj, New Delhi	Functional
12	Muslim Graveyard	DL251576-GY001	Village Roshanpura, Najafgarh Circle, Delhi	Non-traceable
13	Muslim Graveyard	DL281833-GY001	Patpar Ganj, New Delhi	Non-traceable
14	Delhi Waqf Board	432/159-160-161		Non-traceable
15	Muslim Graveyard	DL251577-GY001	Village Sarangpur, Najafgarh Circle, Delhi	Non-traceable
16	Muslim Graveyard	DL281834-GY001	Patpar Ganj, New Delhi	Non-traceable
17	Muslim Graveyard	DL211064-GY001	Village Inderpath, New Delhi	Non-traceable
18	Muslim Graveyard	DL281835-GY001	Patpar Ganj, New Delhi	Non-traceable
19	Delhi Waqf Board	294		Non-traceable
20	Graveyard Village	DL211065-GY001	Nangli Razapur (Inderpath), New Delhi	Non-traceable
21	Muslim Graveyard	DL251579-GY001	Village Dindarpur, Najafgarh Circle, Delhi	Functional
22	Muslim Graveyard	DL281836-GY001	Patpar Ganj, New Delhi	Non-traceable
23	Muslim Graveyard	DL211066-GY001	Mauza Inderpath.	Non-traceable
24	Muslim Graveyard	DL281837-GY001	Sahipur, Delhi	Non-traceable
25	Delhi Waqf Board	274/2		Non-traceable
26	Muslim Graveyard	DL211067-GY001	Qabristan Qadim, South Inder Path, Mathura Road, Nizamuddin, New Delhi	Non-traceable
27	Muslim Graveyard	DL281838-GY001	Gharoli, Delhi	Functional/Individual
28	Muslim Graveyard	DL211068-GY001	Village Nangli Razapur (Inderpath), New Delhi	Non-traceable
29	Muslim Graveyard	DL251582-GY001	Vill. Jafarpur, Delhi	Non-traceable
30	Muslim Graveyard	DL281839-GY001	Vill. Gharoli, Delhi	Non-traceable
31	Muslim Graveyard	DL251583-GY001	Village Pitampura, Najafgarh Circle, Delhi	Non-traceable
32	Muslim Graveyard	DL281840-GY001	Vill. Gharoli, Delhi	Non-traceable
33	Delhi Waqf Board	574/2		Non-traceable
34	Muslim Graveyard	DL231322-GY001		Non-traceable
35	Muslim Graveyard	DL251584-GY001	Village Rawta, Delhi Najafgarh Circle.	Non-functional/Personal
36	Muslim Graveyard	DL281841-GY001	Village Shampur, Delhi	Non-traceable
37	Chabutra Yaran	DL211071-GY001		Non-traceable
38	Muslim Graveyard	DL251585-GY001	Village Devrala, Najafgarh Delhi	Non-traceable
39	Muslim Graveyard	DL211072-GY001	Khajoor Wala	Non-traceable
40	Muslim Graveyard	DL251586-GY001	Vill. Jharoda Kalan, Delhi	Non-traceable
41	Muslim Graveyard	DL281843-GY001	Vill. Chandauli alias Shahdara, Delhi	Non-traceable
42	Muslim Graveyard	DL211073-GY001	Mauza Inderpath	Non-traceable

43	Muslim Graveyard	DL251587-GY001	Mauza Kakrola, Najafgarh Circle, Delhi	Non-traceable
44	Muslim Graveyard	DL281844-GY001	Vill. Chandauli alias Shahdara, Delhi	Non-traceable
45	Muslim Graveyard	DL231326-GY001		Non-traceable
46	Muslim Graveyard	DL251588-GY001	Barhella	Non-traceable
47	Muslim Graveyard	DL281845-GY001	Vill. Chandauli alias Shahdara, Delhi	Non-traceable
48	Delhi Waqf Board	2820		Non-traceable
49	Muslim Graveyard	DL211075-GY001	Village Sarai Kale Khan, New Delhi	Non-traceable
50	Muslim Graveyard	DL251589-GY001	Village Nizampur, Najafgarh Circle, Delhi	Non-traceable
51	Takia and Qabristan	DL281846-GY001	Village Chandrawal, Delhi	Functional
52	Muslim Graveyard	DL190817-GY001	Containing Mazar of Hzt. Syed Jalaluddin Bukhari, Behind Kothi No. 4, Curzon Road	Non-traceable
53	Muslim Graveyard	DL211076-GY001	Kaka Nagar, New Delhi	Non-traceable
54	Muslim Graveyard	DL251590-GY001	Vill. Jonti, Najafgarh Circle, Delhi	Non-traceable
55	Muslim Graveyard	DL281847-GY001	Village Kotla, Circle Shahdara, Delhi	Functional
56	Muslim Graveyard	DL281848-GY001	Village Khichripur, Circle Shahdara, Delhi	Functional
57	Muslim Graveyard	DL190819-GY001	Basant Road, New Delhi	Non-traceable
58	Muslim Graveyard	DL211078-GY001	Opposite Oberoi Inter Continental Hotel, Mathura Road, Nizamuddin, New Delhi	Non-traceable
59	Muslim Graveyard	DL251592-GY001	Village Kanjawala, Najafgarh Circle, Delhi	Non-traceable
60	Muslim Graveyard	DL281849-GY001	Vill. Ghonda Gujran, Circle Shahdara, Delhi	Non-traceable
61	Muslim Graveyard	DL190820-GY001	Behind Church, Gurdwara RakabGanj Road, New Delhi	Non-traceable
62	Muslim Graveyard	DL251593-GY001	Vill. Sadhora Khurd, Delhi	Non-traceable
63	Muslim Graveyard	DL281850-GY001	Village Mandawli, Shahdara Circle, Delhi	Non-traceable
64	Muslim Graveyard	DL190821-GY001	Mauza Aliganj, New Delhi	Non-traceable
65	Muslim Graveyard	DL281851-GY001	Village Mandawli, SHD Circle, Delhi	Non-traceable
66	Muslim Graveyard	DL190822-GY001		Non-traceable
67	Muslim Graveyard	DL211081-GY001	Village Indra Prastha Estate, New Delhi. Commemoration of the divine (Sheikh Mohd. Chishti and Religious ceremonies)	Non-traceable
68	Muslim Graveyard	DL251595-GY001	Village Haibatpur, Najafgarh Circle, Delhi	Non-traceable
69	Delhi Waqf Board	8=17		Non-traceable
70	Muslim Graveyard	DL211082-GY001	Near Lodhi Hotel, New Delhi. Commemoration of the divine (Sheikh Mohd. Chisti and Religious ceremonies)	Non-traceable
71	Muslim Graveyard	DL251597-GY001	Village Haibatpur, Najafgarh Circle, Delhi	Non-traceable
72	Muslim Graveyard	DL251598-GY001	Patti Haibatpur, Delhi	Non-traceable
73	Delhi Waqf Board	120/97		Non-traceable
74	Muslim Graveyard	DL190826-GY001	Tomb of Sheikh Najibuddin, Muslim Graveyard, Village Adchini, New Delhi	Non-traceable
75	Muslim Graveyard	DL261599-GY001		Non-traceable
76	Muslim Graveyard	DL261600-GY001		Non-traceable
77	Muslim Graveyard	DL281857-GY001	Village Shahdara, Delhi	Non-traceable
78	Muslim Graveyard	DL261601-GY001		Non-traceable
79	Muslim Graveyard	DL281858-GY001	Village Shahdara Delhi	Non-traceable
80	Delhi Waqf Board	29/29		Non-traceable
81	Muslim Graveyard	DL261602-GY001		Non-traceable
82	Muslim Graveyard	DL261603-GY001		Non-traceable
83	Muslim Graveyard	DL261604-GY001		Non-traceable
84	Delhi Waqf Board	120/40/21		Non-traceable
85	Muslim Graveyard	DL261605-GY001		Non-traceable
86	Delhi Waqf Board	120/45/3		Non-traceable
87	Muslim Graveyard	DL190834-GY001	Kilokri, New Delhi	Non-traceable
88	Delhi Waqf Board	120/52		Non-traceable
89	Muslim Graveyard	DL190835-GY001	Kothi No. 34, Gurdwara Rakab Ganj Road	Non-traceable
90	Muslim Graveyard	DL261607-GY001		Non-traceable
91	Muslim Graveyard	DL261608-GY001		Non-traceable
92	Delhi Waqf Board	73		Non-traceable
93	Muslim Graveyard	DL221094-GY001		Non-traceable
94	Muslim Graveyard	DL231347-GY001		Non-traceable
95	Muslim Graveyard	DL261609-GY001		Non-traceable

96	Delhi Waqf Board	120/53/54		Non-traceable
97	Muslim Graveyard	DL221095-GY001		Non-traceable
98	Muslim Graveyard	DL231348-GY001		Non-traceable
99	Delhi Waqf Board	120/96		Non-traceable
100	Muslim Graveyard	DL231349-GY001		Non-traceable
101	Muslim Graveyard	DL281868-GY001	Village Shahdara, Delhi	Non-traceable
102	Delhi Waqf Board	120/85/3		Non-traceable
103	Muslim Graveyard	DL231350-GY001		Non-traceable
104	Muslim Graveyard	DL281869-GY001	Village Shahdara, Delhi	Non-traceable
105	Delhi Waqf Board	74		Non-traceable
106	Muslim Graveyard	DL231351-GY001		Non-traceable
107	Muslim Graveyard	DL281870-GY001	Takia Graveyard, Village Shahdara, Delhi	Non-traceable
108	Muslim Graveyard	DL221099-GY001		Non-traceable
109	Muslim Graveyard	DL231352-GY001		Non-traceable
110	Muslim Graveyard	DL281871-GY001	Village Shahdara, Delhi	Non-traceable
111	Muslim Graveyard	DL190844-GY001		Non-traceable
112	Muslim Graveyard	DL221100-GY001		Non-traceable
113	Muslim Graveyard	DL231353-GY001		Non-traceable
114	Muslim Graveyard	DL281872-GY001	Village Shahdara, Delhi	Non-traceable
115	Muslim Graveyard	DL231354-GY001		Non-traceable
116	Muslim Graveyard	DL281873-GY001	Village Shahdara, Delhi	Non-traceable
117	Idgah & Graveyard	DL231355-GY001		Non-traceable
118	Muslim Graveyard	DL281874-GY001	Vill. Chandoli, Shahdara, Delhi	Non-traceable
119	Idgah & Graveyard	DL231356-GY001		Non-traceable
120	Delhi Waqf Board	14		Non-traceable
121	Delhi Waqf Board	5		Non-traceable
122	Muslim Graveyard	DL231359-GY001		Non-traceable
123	Delhi Waqf Board	28/8/2		Non-traceable
124	Muslim Graveyard	DL261621-GY001		Non-traceable
125	Delhi Waqf Board	532/4		Non-traceable
126	Muslim Graveyard	DL261622-GY001		Non-traceable
127	Muslim Graveyard	DL261623-GY001		Non-traceable
128	Muslim Graveyard	DL190853-GY001		Non-traceable
129	Muslim Graveyard	DL261624-GY001		Non-traceable
130	Muslim Graveyard	DL261625-GY001		Non-traceable
131	Delhi Waqf Board	185		Non-traceable
132	Delhi Waqf Board	358/360		Non-traceable
133	Delhi Waqf Board	247		Non-traceable
134	Delhi Waqf Board	158		Non-traceable
135	Muslim Graveyard	DL231371-GY001		Non-traceable
136	Delhi Waqf Board	162		Non-traceable
137	Muslim Graveyard	DL261633-GY001	Village Bakkarwala, Najafgarh Circle, Delhi	Non-traceable
138	Delhi Waqf Board	153/3/9/89		Non-traceable
139	Muslim Graveyard	DL190863-GY001		Non-traceable
140	Muslim Graveyard	DL231375-GY001		Non-traceable
141	Muslim Graveyard	DL281891-GY001		Non-traceable
142	Delhi Waqf Board	68/1		Non-traceable
143	Muslim Graveyard	DL221120-GY001		Non-traceable
144	Muslim Graveyard	DL231376-GY001		Non-traceable
145	Muslim Graveyard	DL281892-GY001		Non-traceable
146	Delhi Waqf Board	1386		Non-traceable
147	Muslim Graveyard	DL231377-GY001		Non-traceable
148	Muslim Graveyard	DL261636-GY001		Non-traceable
149	Muslim Graveyard	DL231378-GY001		Non-traceable
150	Muslim Graveyard	DL261637-GY001		Non-traceable
151	Muslim Graveyard	DL281895-GY001		Non-traceable
152	Muslim Graveyard	DL261639-GY001		Non-traceable
153	Muslim Graveyard	DL090355-GY001		Non-traceable
154	Muslim Graveyard	DL190870-GY001		Non-traceable
155	Muslim Graveyard	DL190871-GY001		Non-traceable

156	Muslim Graveyard	DL231382-GY001		Non-traceable
157	Muslim Graveyard	DL281898-GY001		Non-traceable
158	Muslim Graveyard	DL221127-GY001		Non-traceable
159	Muslim Graveyard	DL281899-GY001		Non-traceable
160	Delhi Waqf Board	577/430		Non-traceable
161	Muslim Graveyard	DL221128-GY001		Non-traceable
162	Muslim Graveyard	DL231384-GY001		Non-traceable
163	Delhi Waqf Board	738		Non-traceable
164	Muslim Graveyard	DL221129-GY001		Non-traceable
165	Muslim Graveyard	DL261644-GY001		Non-traceable
166	Delhi Waqf Board	422/423		Non-traceable
167	Muslim Graveyard	DL221130-GY001		Non-traceable
168	Graveyard	DL261645-GY001		Non-traceable
169	Muslim Graveyard	DL281902-GY001	Village Zia Sarai, New Delhi	Non-traceable
170	Delhi Waqf Board	28/6/2		Non-traceable
171	Delhi Waqf Board	12/7/2001		Non-traceable
172	Muslim graveyard	DL190877-GY001		Non-traceable
173	Muslim Graveyard	DL261648-GY001		Non-traceable
174	Delhi Waqf Board	459		Non-traceable
175	Muslim Graveyard	DL261649-GY001		Non-traceable
176	Delhi Waqf Board	458		Non-traceable
177	Muslim Graveyard	DL140619-GY001	Known as Qabristan Chanhalian Mode	Non-traceable
178	Muslim graveyard	DL190879-GY001		Non-traceable
179	Muslim Graveyard	DL261650-GY001		Non-traceable
180	Delhi Waqf Board	334		Non-traceable
181	Muslim Graveyard	DL190880-GY001		Non-traceable
182	Muslim Graveyard			Non-traceable
183	Takia (Graveyard)	DL261653-GY001		Non-traceable
184	Delhi Waqf Board	429		Non-traceable
185	Muslim Graveyard	DL261654-GY001		Non-traceable
186	Delhi Waqf Board	276/20/06/85		Non-traceable
187	Muslim Graveyard	DL231396-GY001		Non-traceable
188	Delhi Waqf Board	481		Non-traceable
189	Muslim Graveyard	DL231397-GY001		Non-traceable
190	Muslim Graveyard	DL261656-GY001		Non-traceable
191	Delhi Waqf Board	333		Non-traceable
192	Muslim Graveyard	DL190886-GY001		Non-traceable
193	Muslim Graveyard	DL231399-GY001		Non-traceable
194	Muslim Graveyard	DL261657-GY001		Non-traceable
195	Muslim Graveyard	DL231400-GY001		Non-traceable
196	Muslim Graveyard	DL281914-GY001		Non-traceable
197	Delhi Waqf Board	335		Non-traceable
198	Qabristan Nawab	DL190888-GY001		Non-traceable
199	Muslim Graveyard	DL231401-GY001		Non-traceable
200	Muslim Graveyard	DL281915-GY001		Non-traceable
201	Delhi Waqf Board	316/2		Non-traceable
202	Muslim Graveyard	DL231402-GY001		Non-traceable
203	Muslim Graveyard	DL261660-GY001		Non-traceable
204	Muslim Graveyard	DL281916-GY001	Village Inderpath, New Delhi	Non-traceable
205	Delhi Waqf Board	69/5/2		Non-traceable
206	Muslim Graveyard	DL261661-GY001		Non-traceable
207	Muslim Graveyard	DL281917-GY001		Non-traceable
208	Delhi Waqf Board	105 76 Min (old)		Non-traceable
209	Muslim Graveyard	DL261662-GY001		Non-traceable
210	Muslim Graveyard	DL281918-GY001		Non-traceable
211	Delhi Waqf Board	156		Non-traceable
212	Muslim Graveyard	DL261663-GY001		Non-traceable
213	Muslim Graveyard	DL261664-GY001		Non-traceable
214	Muslim Graveyard	DL281920-GY001		Non-traceable
215	Delhi Waqf Board	914		Non-traceable
216	Muslim Graveyard	DL261665-GY001		Non-traceable

217	Muslim Graveyard	DL281921-GY001		Non-traceable
218	Delhi Waqf Board	922		Non-traceable
219	Muslim Graveyard	DL231408-GY001		Non-traceable
220	Muslim Graveyard	DL261666-GY001		Non-traceable
221	Muslim Graveyard	DL200897-GY001	Village Aliganj, New Delhi	Non-traceable
222	Muslim Graveyard	DL231409-GY001		Non-traceable
223	Takia (Graveyard)	DL261667-GY001		Non-traceable
224	Muslim Graveyard	DL281923-GY001		Non-traceable
225	Delhi Waqf Board	835(old)		Non-traceable
226	Muslim Graveyard	DL200898-GY001	Village Aliganj, New Delhi	Non-traceable
227	Muslim Graveyard	DL231410-GY001		Non-traceable
228	Muslim Graveyard	DL261668-GY001		Non-traceable
229	Muslim Graveyard	DL281924-GY001		Non-traceable
230	Delhi Waqf Board	401(new)		Non-traceable
231	Muslim Graveyard	DL200899-GY001	Village Aliganj, New Delhi	Non-traceable
232	Muslim Graveyard	DL231411-GY001		Non-traceable
233	Muslim Graveyard	DL261669-GY001		Non-traceable
234	Muslim Graveyard	DL281925-GY001		Non-traceable
235	Delhi Waqf Board	41/27		Non-traceable
236	Muslim Graveyard	DL200900-GY001	Village Aliganj, New Delhi	Non-traceable
237	Muslim Graveyard	DL221154-GY001		Non-traceable
238	Muslim Graveyard	DL281926-GY001		Non-traceable
239	Muslim Graveyard	DL140640-GY001	Known as Pinjra Sher, Qasabpura, Delhi	Non-traceable
240	Muslim Graveyard	DL200901-GY001	Village Aliganj Basti Nizamuddin, New Delhi	Non-traceable
241	Qadimi Qabristan,	DL221155-GY001		Non-traceable
242	Muslim Graveyard	DL231413-GY001		Non-traceable
243	Muslim Graveyard	DL140641-GY001	Qasabpura, Delhi	Non-traceable
244	Muslim Graveyard	.DL200902-GY001	Aliganj, New Delhi	Non-traceable
245	Qadimi Qabristan	DL221156-GY001	Mehrauli	Non-traceable
246	Muslim Graveyard	DL231415-GY001		Non-traceable
247	Muslim Graveyard	DL261673-GY001	Village Akbarpur Majra, Circle Narela, Delhi	Functional
248	Muslim Graveyard	DL231416-GY001		Non-traceable
249	Delhi Waqf Board	293		Non-traceable
250	Muslim Graveyard	DL200905-GY001	Aliganj, New Delhi	Non-traceable
251	Qabristan known as	DL221159-GY001		Non-traceable
252	Muslim Graveyard	DL231417-GY001		Non-traceable
253	Muslim Graveyard	DL261675-GY001	Village Daryapur Kalan, Circle Narela, Delhi	Functional
254	Muslim Graveyard	DL281931-GY001		Non-traceable
255	Delhi Waqf Board	8		Non-traceable
256	Muslim Graveyard	DL200906-GY001	Village Aliganj, New Delhi	Non-traceable
257	Delhi Waqf Board	198		Non-traceable
258	Muslim Graveyard	DL200907-GY001	Village Aliganj, New Delhi	Non-traceable
259	Muslim Graveyard	DL221161-GY001	Village Sheikh Sarai, New Delhi	Functional
260	Delhi Waqf Board	290		Non-traceable
261	Muslim Graveyard	DL221162-GY001	Village Sheikh Sarai, New Delhi	Non-traceable
262	Muslim Graveyard	DL261678-GY001	Village Alipur, Circle Narela, Delhi	Functional
263	Delhi Waqf Board	373		Non-traceable
264	Muslim Graveyard	DL261679-GY001	Vill. Saraspur, Alipur Circle, Delhi	Non-traceable
265	Delhi Waqf Board	9/12/2002		Non-traceable
266	Muslim Graveyard	DL261680-GY001		Non-traceable
267	Delhi Waqf Board	260		Non-traceable
268	Muslim Graveyard	DL200911-GY001	Village Aliganj, New Delhi	Non-traceable
269	Muslim Graveyard	DL221165-GY001	Sheikh Sarai, Delhi	Non-traceable
270	Muslim Graveyard	DL281937-GY001		Non-traceable
271	Delhi Waqf Board	257		Non-traceable
272	Mazar Mohd Yusuf	DL010021-GY001	Ziarat - Mazra Graveyard, Katyal House, Old Appollo Hotel, Mori Gate	Non-traceable
273	Muslim Graveyard	DL200912-GY001	Village Ali Ganj, New Delhi	Non-traceable

274	Muslim Graveyards	DL221166-GY001	Village Sheikh Sarai, New Delhi	Non-traceable
275	Muslim Graveyard	DL281938-GY001		Non-traceable
276	Delhi Waqf Board	795/640		Non-traceable
277	Muslim Graveyard	DL200913-GY001	Village Aliganj, New Delhi	Non-traceable
278	Muslim Graveyard	DL261683-GY001	Village Badli, Delhi	Functional
279	Muslim Graveyard	DL281939-GY001		Non-traceable
280	Delhi Waqf Board	16		Non-traceable
281	Muslim Graveyard	DL200914-GY001	Village Ali Ganj, New Delhi	Non-traceable
282	Muslim Graveyard	DL231426-GY001		Non-traceable
283	Muslim Graveyard	DL261684-GY001	Village Samaypur, Delhi	Functional
284	Muslim Graveyard	DL281940-GY001		Non-traceable
285	Muslim Graveyard	DL200915-GY001	Village Ali Ganj, New Delhi	Non-traceable
286	Muslim Graveyard	DL231427-GY001		Non-traceable
287	Muslim Graveyard	DL261685-GY001	Village Samaypur, Delhi	Non-traceable
288	Muslim Graveyard	DL281941-GY001		Non-traceable
289	Muslim Graveyard	DL261687-GY001	Village Samaypur, Delhi	Non-traceable
290	Baoli & Qabristan	DL281942-GY001		Non-traceable
291	Muslim Graveyard	DL231429-GY001		Non-traceable
292	Muslim Graveyard	DL261688-GY001	Village Bagh Mochi, New Delhi	Functional
293	Muslim Graveyard	DL231430-GY001		Non-traceable
294	Muslim Graveyard	DL261689-GY001	Vill. Sadhora Khurd, Delhi	Non-traceable
295	Muslim Graveyard	DL281944-GY001		Non-traceable
296	Delhi Waqf Board	M20		Non-traceable
297	Muslim Graveyard	DL150658-GY001	Nabi Karim, Delhi	Functional
298	Muslim Graveyard	DL200919-GY001	Village Ali Ganj, New Delhi	Non-traceable
299	Muslim Graveyard	DL231431-GY001		Non-traceable
300	Muslim Graveyard		Vill. Singhu, Delhi	Non-traceable
301	Muslim Graveyard	DL281945-GY001		Non-traceable
302	Muslim Graveyard	DL231432-GY001		Non-traceable
303	Muslim Graveyard	DL261691-GY001	Vill. Singhu, Delhi	Non-traceable
304	Muslim Graveyard	DL281946-GY001		Non-traceable
305	Muslim Graveyard	DL231433-GY001		Non-traceable
306	Muslim Graveyard	DL261692-GY001	Vill. Salahpur Majra, Circle Narela, Delhi	Non-traceable
307	Qabristan & Gumbad	DL221176-GY001	Village Sheikh Sarai, New Delhi	Non-traceable
308	Muslim Graveyard	DL261693-GY001	Vill. Salahpur Majra, Circle Narela, Delhi	Non-traceable
309	Delhi Waqf Board	105/76 Min (old)		Non-traceable
310	Muslim Graveyard	DL200923-GY001	Village Ali Ganj, New Delhi.	Non-traceable
311	Muslim Graveyard	DL261694-GY001	Vill. Salahpur Majra, Circle Narela, Delhi.	Non-traceable
312	Delhi Waqf Board	129/2/289		Non-traceable
313	Muslim Graveyard	DL200924-GY001	Village Ali Ganj, New Delhi.	Non-traceable
314	Muslim Graveyard	DL261695-GY001	Vill. Salahpur Majra, Circle Narela, Delhi	Non-traceable
315	Muslim Graveyard	DL200925-GY001	Village Ali Ganj, New Delhi.	Non-traceable
316	Muslim Graveyard	DL261696-GY001		Non-traceable
317	Delhi Waqf Board	289 (New)/405		Non-traceable
318	Muslim Graveyard	DL261698-GY001	Punjab Khor, Circle Narela, Delhi	Non-functional
319	Delhi Waqf Board	290/20/6/85		Non-traceable
320	Muslim Graveyard	DL200928-GY001	Village Ali Ganj, New Delhi	Non-traceable
321	Muslim Graveyard	DL200929-GY001	Village Ali Ganj, New Delhi	Non-traceable
322	Muslim Graveyard	DL231442-GY001		Non-traceable
323	Muslim Graveyard	DL261700-GY001	Village Mangolpur Kalan, New Delhi	Non-traceable
324	Muslim Graveyard	DL200930-GY001	Village Ali Ganj, New Delhi	Non-traceable
325	Muslim Graveyard	DL261701-GY001		Non-traceable
326	Muslim Graveyard	DL281956-GY001		Non-traceable
327	Muslim Graveyard	DL221185-GY001	Known as Chooroon Ka-Kunwan Wala, New Delhi, village Chhattarpur, Tehsil	Non-traceable
328	Muslim Graveyard	DL231444-GY001		Non-traceable
329	Muslim Graveyard	DL221186-GY001	Village Chhattarpur, Tehsil Mehrauli	Non-traceable

330	Delhi Waqf Board	104/675(old)		Non-traceable
331	Muslim Graveyard	DL221187-GY001		Non-traceable
332	Muslim Graveyard	DL231446-GY001		Non-traceable
333	Muslim Graveyard	DL221188-GY001		Non-traceable
334	Muslim Graveyard	DL261705-GY001	Village Nangal Thakran, Circle Narela, Delhi	Functional/Personal
335	Muslim Graveyard	DL221189-GY001	Village Chhattarpur	Non-traceable
336	Muslim Graveyard	DL221190-GY001	Village Chhattarpur, Tehsil Mehrauli	Non-traceable
337	Muslim Graveyard	DL231449-GY001	Madangir	Non-traceable
338	Muslim Graveyard	DL261707-GY001	Village Mamoorpur, Circle Narela, Delhi	Functional
339	Muslim Graveyard	DL200937-GY001	Village Aliganj, New Delhi	Non-traceable
340	Muslim Graveyard	DL221191-GY001		Non-traceable
341	Muslim Graveyard	DL261708-GY001		Non-traceable
342	Muslim Graveyard	DL200938-GY001	Known as Chhoti Karbala	Non-traceable
343	Muslim Graveyard	DL231451-GY001		Non-traceable
344	Muslim Graveyard	DL261710-GY001		Non-traceable
345	Muslim Graveyard	DL231456-GY001		Non-traceable
346	Delhi Waqf Board	149		Non-traceable
347	Muslim Graveyard	DL221196-GY001		Non-traceable
348	Muslim Graveyard	DL261714-GY001	Village Bawana, Circle Narela, Delhi	Functional
349	Delhi Waqf Board	510		Non-traceable
350	Muslim Graveyard	DL221198-GY001		Non-traceable
351	Muslim Graveyard	DL231459-GY001		Non-traceable
352	Muslim Graveyard	DL261715-GY001	Village Tajpur Kalan, Circle Narela, Delhi	Functional
353	Delhi Waqf Board	60		Non-traceable
354	Delhi Waqf Board	(NEW) 42		Non-traceable
355	Muslim Graveyard	DL261716-GY001		Non-traceable
356	Delhi Waqf Board	104		Non-traceable
357	Muslim Graveyard	DL221200-GY001		Non-traceable
358	Muslim Graveyard	DL261717-GY001		Non-traceable
359	Delhi Waqf Board	105		Non-traceable
360	Muslim Graveyard	DL261718-GY001	Village Palla, Circle Narela, Delhi	Functional
361	Delhi Waqf Board	421		Non-traceable
362	Muslim Graveyard	DL210947-GY001	Basti Nizamuddin, Opposite Imambara, Delhi	Non-traceable
363	Muslim Graveyard	DL221202-GY001		Non-traceable
364	Muslim Graveyard	DL261719-GY001		Non-traceable
365	Delhi Waqf Board	27/19		Non-traceable
366	Qabristan	DL210948-GY001	Khawaja Hasan Nizami, Basti Nizamuddin	Non-traceable
367	Muslim Graveyard	DL221203-GY001		Non-traceable
368	Muslim Graveyard	DL261720-GY001	Vill. Meer Khuro <i>peer</i> , Circle Narela, Delhi	Non-functional
369	Ihata Qabristan	DL210949-GY001	Opposite Qabristan Imam Saheban, Nizamuddin, New Delhi	Non-traceable
370	Muslim Graveyard	DL221204-GY001		Non-traceable
371	Muslim Graveyard	DL261721-GY001	Village Qutab Garh, Circle Narela, Delhi	Functional
372	Delhi Waqf Board	535/1		Non-traceable
373	Delhi Waqf Board	138		Non-traceable
374	Muslim Graveyard	DL210950-GY001	Nizamuddin Opp. Maqbara Chaunsath Khamba, New Delhi	Non-traceable
375	Muslim Graveyard	DL261722-GY001	Vill. Singhola, Delhi	Functional
376	Delhi Waqf Board	71		Non-traceable
377	Muslim Graveyard	DL231467-GY001		Non-traceable
378	Muslim Graveyard	DL261723-GY001	Village Tiggipur	Non-traceable
379	Delhi Waqf Board	50		Non-traceable
380	Delhi Waqf Board	300		Non-traceable
381	Qabristan Syed Altaf Hussain.	DL210952-GY001		Non-traceable
382	Muslim Graveyard	DL221207-GY001		Non-traceable

383	Muslim Graveyard	DL231468-GY001		Non-traceable
384	Delhi Waqf Board	310		Non-traceable
385	Muslim Graveyard	DL210953-GY001	Known as Ali-Kote, Basti Nizamuddin, Delhi	Non-traceable
386	Muslim Graveyard	DL221208-GY001		Non-traceable
387	Muslim Graveyard	DL261725-GY001	Vill. Razapur Kalan, Circle Narela, Delhi	Functional
388	Delhi Waqf Board	637/350		Non-traceable
389	Delhi Waqf Board	784/465		Non-traceable
390	Muslim Graveyard	DL150694-GY001	Village Pahar Ganj, Multani Dhanda, Delhi	Non-traceable
391	Muslim Graveyard	DL261726-GY001	Vill. Holambi Kalan, Narela Circle, Delhi	Functional
392	Delhi Waqf board	1172		Non-traceable
393	Muslim Graveyard	DL150695-GY001	Village Qadam Sharif	Non-traceable
394	Muslim Graveyard	DL221210-GY001		Non-traceable
395	Muslim Graveyard	DL261727-GY001	Village Khera Khurd	Functional
396	Delhi Waqf board	248		Non-traceable
397	Delhi Waqf Board	164/3		Non-traceable
398	Muslim Graveyard	DL150696-GY001	Vill. Qadam Sharif	Non-traceable
399	Muslim Graveyard	DL221211-GY001		Non-traceable
400	Muslim Graveyard	DL261728-GY001		Non-traceable
401	Delhi Waqf Board	160/3		Non-traceable
402	Muslim Graveyard	DL150697-GY001.	Vill. Qadam Sharif	Non-traceable
403	Muslim Graveyard	DL221212-GY001		Non-traceable
404	Muslim Graveyard	DL261729-GY001		Non-traceable
405	Delhi Waqf Board	637		Non-traceable
406	Delhi Waqf Board	161/3		Non-traceable
407	Muslim Graveyard	DL150698-GY001	Qadam Sharif	Non-traceable
408	Muslim Graveyard	DL221213-GY001		Non-traceable
409	Muslim Graveyard	DL261730-GY001		Non-traceable
410	Muslim Graveyard	DL221214-GY001		Non-traceable
411	Muslim Graveyard	DL261731-GY001	Vill. Nangloi Syed, New Delhi	Non-traceable
412	Delhi Waqf Board	37 Min		Non-traceable
413	Delhi Waqf Board	205/143		Non-traceable
414	Muslim Graveyard	DL261732-GY001	Vill. Nangloi Syed, New Delhi	Non-traceable
415	Delhi Waqf Board	529		Non-traceable
416	Muslim Graveyard	DL221216-GY001		Non-traceable
417	Graveyard, Village	DL231478-GY001		Non-traceable
418	Delhi Waqf Board	559		Non-traceable
419	Muslim Qabristan	DL150703-GY001	Mauza Qadam Sharif, Ram Nagar, Qutab Road, Delhi	Non-traceable
420	Delhi Waqf Board	633		Non-traceable
421	Delhi Waqf Board	62		Non-traceable
422	Muslim Graveyard	DL150704-GY001	Mauza Qadam Sharif, Idgah Road, Delhi	Non-traceable
423	Muslim Graveyard	DL231480-GY001		Non-traceable
424	Muslim Graveyard	DL261736-GY001		Non-traceable
425	Delhi Waqf Board	2018		Non-traceable
426	Muslim Graveyard	457/198		Non-traceable
427	Muslim Graveyard	DL221220-GY001		Non-traceable
428	Muslim Graveyard	DL150706-GY001	Singh Sabha Road, Roshan Ara Garden, Delhi	Non-traceable
429	Muslim Graveyard	DL221222-GY001		Non-traceable
430	Muslim Graveyard	DL231483-GY001		Non-traceable
431	Muslim Graveyard	DL221223-GY001		Non-traceable
432	Delhi Waqf Board	207/1		Non-traceable
433	Muslim Graveyard	DL221224-GY001		Non-traceable
434	Muslim Graveyard	DL261741-GY001	Vill. Azadpur, Delhi	Traceable
435	Delhi Waqf Board	365		Non-traceable
436	Muslim Graveyard	DL221225-GY001		Non-traceable
437	Delhi Waqf Board	556		Non-traceable
438	Muslim Graveyard	DL150711-GY001	Qadam Sharif, Pahar Ganj, Delhi	Non-traceable

439	Muslim Graveyard	DL221226-GY001		Non-traceable
440	Delhi Waqf Board	15		Non-traceable
441	Muslim Graveyard	DL221227-GY001		Non-traceable
442	Muslim Graveyard	DL261744-GY001	Vill. Azadpur, Delhi	Non-traceable
443	Delhi Waqf Board	T-380-A		Non-traceable
444	Muslim Graveyard	DL221228-GY001		Non-traceable
445	Muslim Qabristan	DL231489-GY001		Non-traceable
446	Delhi Waqf Board	563/87		Non-traceable
447	Muslim Graveyard	DL221229-GY001		Non-traceable
448	Muslim Qabristan	DL231490-GY001		Non-traceable
449	Muslim Qabristan	DL231491-GY001		Non-traceable
450	Muslim Qabristan	DL231492-GY001		Non-traceable
451	Delhi Waqf Board	144		Non-traceable
452	Delhi Waqf Board	533/382		Non-traceable
453	Delhi Waqf Board	50/5/2		Non-traceable
454	Muslim Graveyard	DL231498-GY001		Non-traceable
455	Delhi Waqf Board	287/1		Non-traceable
456	Muslim Graveyard	DL261755-GY001	Vill. Dhakka, Delhi	Non-traceable
457	Delhi Waqf Board	35/25/1		Non-traceable
458	House & Graveyard	DL210984-GY001	Basti Nizamuddin, New Delhi	Non-traceable
459	Muslim Graveyard	DL231500-GY001		Non-traceable
460	Graveyard	DL210985-GY001	Locally known as Qabristan Nawab Elahi Baksh, Basti Nizamuddin, New Delhi	Non-traceable
461	Muslim Graveyard	DL271755-GY001	Vill. Dhakka, Delhi	Non-traceable
462	Graveyard Mauza	DL210986-GY001	Ali Ganj, Nizamuddin, New Delhi	Non-traceable
463	Muslim Graveyard	DL231502-GY001		Non-traceable
464	Muslim Graveyard	DL231503-GY001		Non-traceable
465	Graveyard	DL271757-GY001		Non-traceable
466	Delhi Waqf Board	318		Non-traceable
467	Muslim Graveyard	DL241504-GY001		Non-traceable
468	Muslim Graveyard	DL160731-GY001	New Rohtak Road, Karol Bagh, New Delhi	Non-traceable
469	Muslim Graveyard	DL241505-GY001		Non-traceable
470	Muslim Graveyard	DL160732-GY001	Western Extension Area, Karol Bagh, Delhi	Non-traceable
471	Muslim Graveyard	DL241506-GY001		Non-traceable
472	Muslim Graveyard	DL271762-GY001	Near Wazirabad Bridge	Functional
473	Delhi Waqf Board	959		Non-traceable
474	Muslim Graveyard	DL221249-GY001	Village Ladha Sarai	Non-functional
475	Muslim Graveyard	DL241507-GY001		Non-traceable
476	Muslim Graveyard	DL271763-GY001	Wazirabad Road, Civil Lines, Delhi	Functional
477	Delhi Waqf Board	19		Non-traceable
478	Muslim Graveyard	DL241508-GY001		Non-traceable
479	Muslim Graveyard	DL241509-GY001		Non-traceable
480	Delhi Waqf Board	52/36		Non-traceable
481	Muslim Graveyard	DL160736-GY001	Qabristan Rajan, Karol Bagh, New Delhi	Non-traceable
482	Muslim Graveyard	DL241510-GY001		Non-traceable
483	Mohammedan graveyard	DL271766-GY001	Khybar Pass, Near Petrol Pump, Delhi	Non-functional
484	Muslim Graveyard	276		Non-traceable
485	Muslim Graveyard	DL210997-GY001	Qabristan Syed Mohd. Imam, Basti Nizamuddin, Delhi	Non-traceable
486	Muslim Graveyard	DL241511-GY001		Non-traceable
487	Delhi Waqf Board	97		Non-traceable
488	Muslim Graveyard	DL241512-GY001		Non-traceable
489	Delhi Waqf Board	72/27		Non-traceable
490	Muslim Graveyard	DL241513-GY001		Non-traceable
491	Delhi Waqf Board	2775/738		Non-traceable

492	Muslim Graveyard	DL211000-GY001	Nizamuddin, New Delhi	Non-traceable
493	Muslim Graveyard	DL221256-GY001		Non-traceable
494	Muslim Graveyard	DL241514-GY001	Village Palam, New Delhi	Functional
495	Muslim Graveyard	DL241515-GY001		Non-traceable
496	Muslim Graveyard	DL241516-GY001		Non-traceable
497	Muslim Graveyard	DL271772-GY001	Court Lane, Rajpur Road, Delhi	Non-traceable
498	Muslim Graveyard	DL221259-GY001		Non-traceable
499	Muslim Graveyard	DL241517-GY001		Non-traceable
500	Muslim Graveyard	DL271773-GY001	Rajpur Road, Delhi	Non-traceable
501	Delhi Waqf Board	242		Non-traceable
502	Muslim Graveyard	DL241518-GY001		Non-traceable
503	Muslim Graveyard	DL211005-GY001	Known as Qabristan Shahzadgan, Basti Nizamuddin, New Delhi	Non-traceable
504	Muslim Graveyard	DL241519-GY001		Non-traceable
505	Delhi Waqf Board	451/279		Non-traceable
506	Muslim Graveyard	DL211006-GY001	Opposite Lal Mahal, Basti Nizamuddin, Delhi	Non-traceable
507	Muslim Graveyard	DL241520-GY001	Village Rajhapur	Non-traceable
508	Delhi Waqf Board	1531		Non-traceable
509	Muslim Graveyard	DL170747-GY001	Moti Bagh, Delhi	Non-traceable
510	Muslim Graveyard	DL211007-GY001	Basti Nizamuddin, New Delhi	Non-traceable
511	Muslim Graveyard	DL241521-GY001		Non-traceable
512	Delhi Waqf Board	1117/1		Non-traceable
513	Muslim Graveyard	DL221264-GY001		Non-traceable
514	Muslim Graveyard	DL241522-GY001	Village Shahabad	Non-traceable
515	Delhi Waqf Board	188		Non-traceable
516	Muslim Graveyard	DL221265-GY001		Non-traceable
517	Muslim Graveyard	DL241523-GY001		Non-traceable
518	Muslim Graveyard	DL211010-GY001	Ahata known as Qabristan Bakhshullah Beg	Non-traceable
519	Muslim Graveyard	DL221266-GY001		Non-traceable
520	Muslim Graveyard	DL241524-GY001		Non-traceable
521	Delhi Waqf Board	135		Non-traceable
522	Muslim Graveyard	DL241525-GY001		Non-traceable
523	Muslim Graveyard	DL281781-GY001	Village Oldenpur, Delhi	Non-traceable
524	Muslim Graveyard	DL241526-GY001		Non-traceable
525	Delhi Waqf Board	171		Non-traceable
526	Muslim Graveyard	DL241527-GY001		Non-traceable
527	Delhi Waqf Board	169		Non-traceable
528	Muslim Graveyard	DL241529-GY001		Non-traceable
529	Muslim Graveyard	DL241531-GY001		Non-traceable
530	Muslim Graveyard	DL241532-GY001		Non-traceable
531	Delhi Waqf Board	147,148		Non-traceable
532	Muslim Graveyard	DL241533-GY001		Non-traceable
533	Muslim Graveyard	DL241534-GY001		Non-traceable
534	Muslim Graveyard	DL281789-GY001	Vill. Karawal Nagar, Shahdara Circle, Delhi	Non-traceable
535	Delhi Waqf Board	150		Non-traceable
536	Delhi Waqf Board	137		Non-traceable
537	Muslim Graveyard	DL221277-GY001		Non-traceable
538	Muslim Graveyard	DL241536-GY001		Non-traceable
539	Muslim Graveyard	DL221278-GY001	Village Ladha Sarai, New Delhi	Functional
540	Muslim Graveyard	DL241538-GY001		Non-traceable
541	Delhi Waqf Board	110		Non-traceable
542	Muslim Graveyard	DL241539-GY001		Non-traceable
543	Muslim Graveyard	DL211025-GY001	Known as Qabristan Qadim Arab ki Sarai, Basti Nizamuddin, New Delhi	Non-traceable
544	Muslim Graveyard	DL241540-GY001		Non-traceable

545	Muslim Graveyard	DL281795-GY001	Jawala Nagar, SHD, Delhi	Non-traceable
546	Delhi Waqf Board	130		Non-traceable
547	Graveyard	DL190765-GY001	Kaka Nagar	Non-traceable
548	Muslim Graveyard	DL241541-GY001		Non-traceable
549	Muslim Graveyard	DL281796-GY001	Jawala Nagar, SHD, Delhi	Non-traceable
550	Delhi Waqf Board	22		Non-traceable
551	Muslim Graveyard	DL241542-GY001		Non-traceable
552	Muslim Graveyard	DL281797-GY001	Jawala Nagar, SHD, Delhi	Non-traceable
553	Muslim Graveyard	DL221284-GY001		Non-traceable
554	Muslim Graveyard	DL241543-GY001		Non-traceable
555	Muslim Graveyard	DL281798-GY001	Village SHD, Jawala Nagar, Shahdara, Delhi	Non-traceable
556	Delhi Waqf Board	217		Non-traceable
557	Muslim Graveyard	DL211029-GY001	Bhogal Jangpura, Nizamuddin, New Delhi	Non-traceable
558	Muslim Graveyard	DL241544-GY001		Non-traceable
559	Muslim Graveyard	DL241545-GY001		Non-traceable
560	Muslim Graveyard	DL241546-GY001		Non-traceable
561	Muslim Graveyard	DL281801-GY001	Village Salempur Barari, Delhi	Non-traceable
562	Muslim Graveyard	DL241600-GY001		Non-traceable
563	Muslim Graveyard	DL281804-GY001	Vill. Ghonda Gujran Banger, Delhi	Non-traceable
564	Muslim Graveyard	DL281805-GY001	Village Mustafabad, Delhi	Functional
565	Muslim Graveyard	DL281806-GY001	Village Nimri, Delhi	Non-traceable
566	Muslim Graveyard	DL211037-GY001	Village Jangpura, New Delhi	Non-traceable
567	Takia (Graveyard)	DL251551-GY001	Kachacha Tihar, Najafgarh Road, New Delhi	Non-traceable
568	Delhi Waqf Board	103		Non-traceable
569	Qabristan Raiyan	DL120522-GY001	Malka Ganj Road, Subzi Mandi, Delhi	Functional/Individual
570	Muslim Graveyard	DL211038-GY001	Village Jangpura, New Delhi	Non-traceable
571	Takia Graveyard	DL251552-GY001	Kachacha Tihar, Najafgarh Road,, New Delhi	Non-traceable
572	Muslim Graveyard	DL281808-GY001	Village Khureji Khas, Shahdara Circle, Delhi	Functional
573	Muslim Graveyard	DL211039-GY001	Village Jangpura, New Delhi	Non-traceable
574	Muslim Graveyard	DL251553-GY001	Known as Takia Chaman-wala, Village Kachacha Tihar, Delhi	Non-traceable
575	Muslim Graveyard	DL281809-GY001	Village Khureji Khas, Shahdara Circle, Delhi	Non-traceable
576	Muslim Graveyard	DL211040-GY001	Village Jangpura, New Delhi	Non-traceable
577	Muslim Graveyard	DL221296-GY001		Non-traceable
578	Muslim Graveyard	DL251554-GY001	Attey Wala, Village Kachacha Tihar, Delhi	Non-traceable
579	Muslim Graveyard	DL281810-GY001	Village Khureji Khas, Shahdara Circle, Delhi	Non-traceable
580	Muslim Graveyard	DL221357-GY001		Non-traceable
581	Muslim Graveyard	DL251557-GY001	Village Najafgarh, Dehi	Non-traceable
582	Delhi Waqf Board	51		Non-traceable
583	Muslim Graveyard	DL211044-GY001	Village Jangpura, New Delhi	Non-traceable
584	Muslim Graveyard	DL221384-GY001		Non-traceable
585	Muslim Graveyard	DL251558-GY001	Village Najafgarh, Dehi	Non-traceable
586	Muslim Graveyard	DL211045-GY001	Jangpura, New Delhi	Non-traceable
587	Muslim Graveyard	DL251559-GY001	Village Najafgarh, Dehi	Non-traceable
588	Muslim Graveyard	DL281815-GY001	Vill. Khureji Khas, Shahdara Circle, Delhi	Non-traceable
589	Muslim Graveyard	DL231297-GY001		Non-traceable
590	Muslim Graveyard	DL221357-GY001		Non-traceable
591	Muslim Graveyard	DL251557-GY001	Village Najafgarh, Delhi	Non-traceable
592	Delhi Waqf Board	51		Non-traceable
593	Muslim Graveyard	DL211044-GY001	Village Jangpura, New Delhi	Non-traceable
594	Muslim Graveyard	DL221384-GY001		Non-traceable
595	Muslim Graveyard	DL251558-GY001	Village Najafgarh, Delhi	Non-traceable

596	Muslim Graveyard	DL211045-GY001	Jangpura, New Delhi	Non-traceable
597	Muslim Graveyard	DL251559-GY001	Village Najafgarh, Dehi	Non-traceable
598	Muslim Graveyard	DL281815-GY001	Vill. Khureji Khas, Shahdara Circle, Delhi	Non-traceable
599	Muslim Graveyard	DL231297-GY001		Non-traceable
600	Muslim Graveyard	DL251560-GY001	Village Najafgarh, Dehi	Non-traceable
601	Muslim Graveyard	DL211047-GY001	Village Chiragh Delhi, Dayal Bagh Colony, New Delhi	Non-traceable
602	Muslim Graveyard	DL231298-GY001		Non-traceable
603	Muslim Graveyard	DL251561-GY001	Village Najafgarh, Delhi	Non-traceable
604	Muslim Graveyard	DL211048-GY001	Vill. Chiragh Delhi, Dayal Bagh Colony, Delhi	Non-traceable
605	Muslim Graveyard,	DL231299-GY001		Non-traceable
606	Muslim Graveyard	DL251562-GY001	Qabristan Panjpir, Village Najafgarh, Delhi	Non-traceable
607	Muslim Graveyard	DL281819-GY001	Vill. Mandawli, Circle Shahdara, Delhi	Functional/Government
608	Muslim Graveyard	DL211049-GY001	Vill. Chiragh Delhi, Dayal Bagh Colony, Delhi	Non-traceable
609	Muslim Graveyard	DL231300-GY001		Non-traceable
610	Muslim Graveyard	DL281820-GY001	Vill. Mandawli, Circle Shahdara, Delhi	Non-traceable
611	Muslim Graveyard	DL211050-GY001	Village Okhla, New Delhi	Non-traceable
612	Muslim Graveyard	DL231301-GY001		Non-traceable
613	Muslim Graveyard	DL251564-GY001	Najafgarh, Delhi	Non-traceable
614	Muslim Graveyard	DL281821-GY001	Vill. Mandawli, Circle Shahdara, Delhi	Non-traceable
615	Muslim Graveyard	DL211051-GY001	Village Okhla, New Delhi	Non-traceable
616	Muslim Graveyard	DL231303-GY001		Non-traceable
617	Muslim Graveyard	DL231304-GY001		Non-traceable
618	Muslim Graveyard	DL211053-GY001	Village Okhla, New Delhi	Non-traceable
619	Muslim Graveyard	DL231305-GY001		Non-traceable
620	Muslim Graveyard	DL120538-GY001	Kh. No. 260, Subzim Mandi, Delhi	Non-traceable
621	Muslim Graveyard	DL231306-GY001		Non-traceable
622	Muslim Graveyard	DL120539-GY001	Kh. No. 257, Subzi Mandi, Delhi	Non-traceable
623	Muslim Graveyard	DL231307-GY001		Non-traceable

S. No.	Name of Property	Address of Graveyard	Status of Graveyard
Graveyards not listed in DWB list, but belong to DWB according to respondents			
624	Bakner Qabristan	Bakner Qabristan, Eid Gah Road, Narela	Functional
625	Mugheshpur Qabristan	Mugheshpur Village	Functional
626	Tajpur Road Qabristan	Village Palla, Tajpur Road, Narela, Delhi	Functional
627	Bakhtawarpur Tyagi Qabristan	Village Bakhtawarpur Delhi	Functional
628	Bakhtawarpur Malik Qabristan	Village Bakhtawarpur Delhi (Malik)	Functional
629	Bakhtawarpur Pathan Qabristan	Village Bakhtawarpur Delhi (Pathan)	Functional
630	Bakhtawarpur Malha Qabristan	Village Bakhtawarpur Delhi (Malha)	Functional
631	Bakhtawarpur Alvi Fakeer Qabristan	Village Bakhtawarpur Delhi (Alvi Fakeer Caste)	Functional
632	Begumpur Qabristan	Sarai Shah Ji Near Begumpur Malviya Nagar, Shapur Jat	Non-functional
633	Daksinpuri Qabristan	Block No. 20, Daksinpuri, Ambedker Nagar, Delhi	Functional
634	Khirkki Village Qabristan	Khirkki Village Near, DLF Mall, Saket, Delhi	Functional
635	Muslim Graveyard	Pukhta Bawali Khirkki Village, Near DLF Mall, Saket	Non-functional
636	Dargah Masjid	Dargah Masjid, Khirkki Village, Saket, Delhi	Non-functional
637	Baqi Balli Qabristan	Dargah hazrat khwaja Baqi Balli Pharganj Delhi	Functional
638	Tihar Qabristan	Khasra No. 1575 Tihar village Shahpur Road	Functional
639	Bihari Colony Qabristan	Road No. 51, Shalimar Park, Bihari Colony, Delhi	Functional
640	Najafgarh Qabristan	Dhansh Stand Bharat Petrol Pump Najafgarh Delhi	Functional
641	Welcome Qabristan	Welcome Seelampur Delhi	Functional
642	Tihar Vilalger Qabristan	Ajay Enclave, Ajanta Market, Shubhash Nagar, Delhi	Functional
643	Nau gaz peer baba Qabristan	M.G Road, Near water tank, Sultanpur, Delhi	Functional

644	Andheria Qabristan	Hazrat Makhdom Sammuddin, Andheria More, Mahrauli	Functional
645	Auliya Qabristan	Auliya Masjid, Mahrauli Delhi	Functional
646	Hazrat Nizamuddin Qabristan	Hazrat Nizamuddin, Lajpat Rai Marg, Delhi	Functional
647	Muslim Qabristan	Rangpuri pahri, Sultan Ghari Near D.Block Vasant Kunj	Non-functional
648	Ganj Shahida Qabristan	Ward No.2, Near Shahi Eidgah, Mahrauli New Delhi	Functional
649	District Park Qabristan	District Park, Hauz Khas, Delhi	Functional
650	Hauz Rani Qabristan	Qadeem Muslim Qabristan, Hauz Rani, Near Max Hospital, Sakat	Functional
651	Goyla Dairy Qabristan	Goyla Dairy , Dwarka Goyla Dairy Road New Delhi-71	Non-functional

S. No.	Name of Property	Address of Graveyard	Status of Graveyard
Graveyards owned by MCD			
652	Burial Ground, Buland Masjid, Shastri Park Qabristan	Bhrashtachar Nirodhak Samiti, Sh. Maqsood Ali, President, B-267, Buland Masjid, Shastri Park Extn. Delhi	Functional
653	Burial Ground, Khureji Qabristan	F-31, Jawahar Park West Laxmi Nagar, Delhi	Non-traceable
654	Mulla colony Qabristan	Ahley Noorani Anjuman, C-207, Harijan Basti, Mulla colony, Delhi	Functional
655	MCD Muslim Graveyard	Netaji Subhash Palace, Wazirpur (Shakurpur JJ Colony), Delhi	Non-traceable
656	Mangolpur Khurd Qabristan	Avantika, Near DJB Pump House, Rohini Sector-1, Delhi	Functional
657	Madanpur Khadar Qabristan	A-2/801, JJ Colony Madanpur Khadar	Non-traceable
658	Dwarka Sec-24 Qabristan	Near Kargil, Dwarka, Sector 24	Functional
659	Sawda Qabristan	Swada, J.J. Resettlement Colony	Functional
Graveyards not listed in MCD list, but belong to MCD according to respondents			
660	Tahirpur Qabristan	Gali No. 4, Tahirpur Leprosy Complex, Delhi	Functional
661	New Seemapuri Qabristan	Jannat-e-Bahar Qabristan F-Block New Seemapuri	Functional
662	Jyoti Colony Qabristan	Jyoti Colony, Wazirabad Road, Delhi	Functional

S. No.	Name of Property	Address of Graveyard	Status of Graveyard
Graveyards owned by Delhi Development Authority (DDA)			
663	Nangloi Qabristan	Near Surajmal Stadium, Nangloi, Delhi	Functional
664	DDA Park Qadimi Qabristan	Tughlakabad Village, Okhla Phases-I, Delhi	Functional
665	New Badarpur Qabristan	Near Shashi camp railway line, Old Mehrauli Delhi	Functional/
666	Old Seemapuri Qabristan	J&K Block, Dilshad Garden, Delhi	Functional
667	Muslim Qabristan Sitapuri	Dabri Village, Near Sitapuri Extention, Delhi	Functional

S. No.	Name of Property	Address of Graveyard	Status of Graveyard
Graveyards owned by Community			
668	Qadimi Qabristan Madina Masjid	Mukarba Chowk, GTK Road By Pass, Delhi	Functional
669	Khuraini Qabristan	Near Khuraini Masjid, Narela, Delhi	Functional
670	Shidipura Qabristan	Anujman wakil-e-quam punjabian Qabristan near Shidipura Market, Old Delhi	Functional
671	Takya Azam Shah Qabristan	Bhadsha Koua, Eidgah Road, Qureshy Nagar Delhi	Functional
672	Hiranki Qabristan	Hiranki Village Narela Delhi	Functional
673	Khajoori Qabristan	B-Block, Gali No.18, Shri Ram Colony Nagar, Khajoori,	Functional

		Delhi	
674	Qabristan Mustafabad	25-foot Rroad Qabristan Mustafabad, Delhi	Functional
675	Kalu Qabristan	Village Kalu Sarai, Near IIT Delhi	Functional
676	Mandipur Qabristan	Pocket-2, Madipur Village, Delhi	Functional
677	Sourab Vihar Qabristan	A Block Sourab Vihar, Jaitpur, Delhi	Functional
678	Khera Qabristan	Mandawli Khera, Near Mandawli Extension, Sewa Dham Road, Delhi	Functional
679	Nithari village Qabristan	Nithari village Near MCD School Delhi	Functional
680	Dawoodi Bohra Qabristan	Dilli Gate, Delhi	Functional

S. No.	Name of Property	Address of Graveyard	Status of Graveyard
Graveyards owned by Private Persons			
681	Nangal Thakran Qabristan	Khasra No. 4/23, Village Nangal Thakran, Narela, Delhi	Functional
682	Qadimi Qabristan	Qadimi Qabristan Kardampuri Near Gas Plant, Delhi	Functional
683	Chiragh Dilli Qabristan	Hazrat Dargah Chowk, Chiragh Dilli	Functional
684	Khidmat-e-khalaq Qabristan	Khidmat-e-Khalq Committee D-1, Jaitpur part-II Near	Functional
685	Khadda Qabristan	Khadda Colony, Jaitpur, Phase -II, Delhi	Functional
686	Qabristan Dabri Village	Dabri village, Delhi	Functional
687	Prahladpur Qabristan	Prahladpur Village, Delhi	Functional
688	Qabristan Chamalian	7780 Gali Qabristan Chamalian, Rani Jhansi Road, Bada Hindu Rao Delhi	Functional

S. No.	Name of Property	Address of Graveyard	Status of Graveyard
Graveyards owned by Government and Gram Sabha			
689	Badarpur Qabristan	Mathura Road Badarpur, Delhi	Functional
690	Khyala Qabristan	Raghubir Nagar Khyala Gaon, Near MCD School, Delhi	Functional
691	Inder Enclave Qabristan	Inder Enclave Phase II, Kirari Suleman, Delhi	Functional
692	Chandan Hulla Qabristan	Chandan Hulla , Near Punjab National Bank, Chhatarpur	Functional
693	Ghitorni Qabristan	Near Tel Depo, Ghitorni, Delhi	Functional
694	Mandi Village Qabristan	Near M.C.D School, Mandi Village, Delhi	Functional
695	Bapu Camp Qabristan	Bapu Camp & Shambhu Colony Delhi	Functional
696	Satbari kharak Qabristan	Near C.S.K.M collage, New Satbari kharak village, Delhi	Functional
697	Mahdiyan Qabristan	Dargah Hazrat Imam Shahwali-ullah, Mollan Azad Medical College, Delhi	Functional
698	Jadid Qabristan	Ahle Islam, Dilli Gate, Delhi	Functional
699	Shaheen Bagh	Thokar No.6 Shaheen Bagh Near Police Chowki, Delhi	Functional
700	Hastal Colony Qabristan	Near Eidgah, JJ Colony, Hastal Vihar, Uttam Nagar, Delhi	Functional
701	Vipin Garden Qabristan	Vipin Garden, Uttam Nagar, Delhi	Functional

S. No.	Name of Property	Address of Graveyard		Status of Graveyard
Graveyards owned by others				
702	Thao Haji mohalla Qabristan	Thao Haji mohalla Near Aameen farm house , Chhatarpur, Delhi	Irrigation Department	Functional
703	Batla house Qabristan	Near Jamia Millia Islamia, Batla House, Delhi	JMIU	Functional
704	Delhi Cantt. Qabristan	C.V.D line Delhi Cantt, Delhi	Delhi Cant.	Functional

(Sources: DWB List: www.dwb.gov.co.in; MCD list: http://111.93.49.28:18080/mcd_healthweb/cremationgroundsetzlistview; Other Lists: Data collected during field work)

Note: The DWB list has been presented in verbatim, except the column on status which has been filled on the basis of field work inputs. In sl. nos. 1-623, the space for address is blank

in many cases as these are not available in the DWB list. Also in the DWB list, it was not always possible to exactly identify the traced graveyards of an area out of the listed graveyards due to incomplete address. Therefore, some of the traced graveyards (shown as functional or non-functional) in the DWB list have been identified on the basis of approximation.

Appendix 7

RESEARCH TOOLS

Graveyard Data Sheet-cum-Interview Schedule

A STUDY REGARDING THE PROBLEMS & STATUS OF GRAVEYARDS IN DELHI

Conducted by HUMAN DEVELOPMENT SOCIETY, Delhi

Supported by DELHI MINORITIES COMMISSION

Respondent No.:

--	--	--

SURVEY DATA

Address of Graveyard:
.....

1. GENERAL INFORMATION

1.1. Name of respondent/graveyard official:

Mobile No. (optional):

1.2. Position or Role in graveyard:

2. LOCATION AND PHYSICAL CONDITION OF GRAVEYARD

2.1. Year of establishment graveyard:

2.2. Area of graveyard (in acre/bigha):.....

2.3. Has the graveyard land been encroached? 1. Yes 2. No

2.4. Quantity of encroached land (in acre/ bigha):

2.5. Name of encroacher:

2.6. Is the graveyard located in inhabited colonies? 1. Yes 2. No

2.7. If yes, please share your suggestions regarding scope for its relocation:
.....

2.8. Type of graveyard: 1. In the vicinity of Mosque 2. Peer or Mazar
 3. Land 4. Others (specify):

2.9. Who owns the graveyard land?

2.10. Total approx. population of areas that are dependent on the
graveyard:.....(no.)

2.11. Names of dependent areas:

2.12. Distance of the farthest area that is dependent on the graveyard: km

2.13. Physical verification note (boundary wall, street light, guards etc., their conditions):
.....

3. GRAVEYARD MANAGEMENT

3.1. Management and administrative structure of graveyard:
.....

3.2. Note on current status of functioning of graveyard management:
.....

3.3. Number of persons engaged in maintenance and development of graveyards:

3.4. Please suggest future plan of action for development of the graveyard:
.....

4. FUNCTIONING OF GRAVEYARD

4.1. Number of funerals conducted in the graveyard in a month: (in number)

4.2. Do you think this graveyard is adequate for number of deaths that take place in the areas?

1. Yes 2. No

4.3. Existing facilities of the graveyard: 1. Space for namaz e janaza 2. Water tank/bore-well

4. Digging equipment 5. Other (Specify)

4.4. Does the graveyard charge money for last rites: 1. Yes 2. No

4.5. If yes to q. no. 2.7, write the amount: (in rupees)

4.6. Break up of charge under different heads:

4.7. Capacity of the graveyard:

4.8. Current vacancy in the graveyard:

4.9. Documents needed for burial:

Signature of interviewer:

Interview Schedule for Muslim Leaders, Community Members and Organisations

A STUDY REGARDING THE PROBLEMS & STATUS OF GRAVEYARDS IN DELHI

Conducted by HUMAN DEVELOPMENT SOCIETY, Delhi

Supported by DELHI MINORITIES COMMISSION

Respondent No.:

--	--

1. GENERAL INFORMATION

1.1. Name of respondent: Mobile No.(optional):

1.2. Position/occupation:

1.3. Organisation and address:

2. VIEWS REGARDING GRAVEYARDS IN DELHI

2.1. Do you think the number of graveyards currently in use in Delhi is sufficient for the Muslim community?

- 1. Yes
- 2. No

2.2. Please elaborate the reason for your reply to q. no. 2.1.

.....
.....

2.3. Please tell us the areas in Delhi which are known for shortage of graveyards.

.....
.....

2.4. Please share your views regarding problems faced by graveyards in Delhi?

.....
.....

2.5. Please suggest measures for improving the conditions of graveyards in Delhi

.....
.....

2.6. Please share your views regarding feasibility of eco-friendly concepts for graveyards.

.....
.....

Signature of interviewer:

Appendix 8

PHOTO GALLERY



Akbarpur Graveyard



Anjuman Wakil-e-Qaum-e Punjabian Qabristan



Auliya Masjid, Mehrauli



Bara Hindu Rao Graveyard



Bakner Graveyard



Batla House Graveyard



Sri Ram Colony, Nagar Khajoori, Delhi



Buland Masjid, Shastri Park



Dargah Haji Sahab, Ward No. 7



DDA Park, Dhaula Kuan



Maulana Azad Medical College



Daryapur Kalan, Narela

Dilli Gate



Fazil Muslim Qabristan, Sunder Nagri



Ghonda near Markazi Masjid



Amar Colony, Gokul Puri



Gharoli Graveyard



Andheria Mor, Mehrauli



Qabristan Panj Peeram, Hazrat Nizamuddin



Holambi Village Graveyard



Inder Enclave, Phase-II, Kirari Suleman



Jadeed Qabristan, Dilli Gate



New Seemapuri



Sangam Vihar



JJ Colony Hastal Vihar, Uttam Nagar



Khadda Colony, Jaitpur



Khera Kalan Graveyard



Mayur Vihar Phase II



Jaitpur Part II



Khirki Village, Saket



Khirki Village, Saket



Khyber Pass



Civil Lines



Kotla Mayur Vihar, Trilokpuri



Kotla Village Graveyard



Lado Sarai Qabristan



Lampur Village



Leprosy Colony



Madipur Village, Pocket 2



Malka Ganj



Mandi Village



Mungeshpur Village



Mulla Colony



J&K Block, Dilshad Garden



Mathura Road, Badarpur



Singhola Village, Narela



Dabari Village



Dabari Village, Near Sitapuri



Najafgarh



Jyoti Colony, Near Wazirabad



JJ Colony, Sawada Ghewera



Mandawli



Nangloi



Prahladpur Banger



Village Mandawli



Welcome, Seelampur



Nabi Karim



Old Mehrauli, Shashi Camp



Paharganj



Palla Village



Palla Village, Tajpur



Patparganj, Mayur Vihar



Avantika, Rohini



New Roshan Pura



Tughlakabad



Qureshi Nagar



Razapur Bhorgarh



Shalimar Park, Bihari Colony



Samaipur



Satbari Village, near K G Farm



SDMC Qubristan, Sector 24



Shah Nagar, Manglapuri



Shaikh Sarai



Sourab Vihar, Jaitpur



Tajpur Kalan, Narela



Village Dindapur, Gurgaon



Village Kalu Sarai



Khurani Village



Panna Mamurpur Village



Qutabgarh Village



Near Shahi Eidgah, Mehrauli



Wazirabad



Hauz Rani, Saket

Other publications of DMC

Sample Survey of Economical, social, political and educational status of EWS Christian in Delhi

<http://www.delhi.gov.in/wps/wcm/connect/a46833804946d005a4b2ff6e7ab98a3b/4.pdf?MOD=AJPERES&lmod=-673733246&CACHEID=a46833804946d005a4b2ff6e7ab98a3b>

The Status of Punjabi and Urdu languages in the administration and schools in Delhi

<http://www.delhi.gov.in/wps/wcm/connect/47b900004946cd09a487ff6e7ab98a3b/1.pdf?MOD=AJPERES&lmod=-673756276&CACHEID=47b900004946cd09a487ff6e7ab98a3b>

A study on Education of Muslim children in Delhi: the dynamics of decision-making and possible modes of interventions to promote their educability

<http://www.delhi.gov.in/wps/wcm/connect/2c6b4c004946d172a4baff6e7ab98a3b/5.pdf?MOD=AJPERES&lmod=-673727706&CACHEID=2c6b4c004946d172a4baff6e7ab98a3b>

A final report on Survey of madrasas in Delhi under madrasa modernisation programme

<http://www.delhi.gov.in/wps/wcm/connect/399f3e004946d239a4c2ff6e7ab98a3b/6.pdf?MOD=AJPERES&lmod=-673721530&CACHEID=399f3e004946d239a4c2ff6e7ab98a3b>

Analysis report as part of Final Report of Survey of the Minority Girls Students in concentrated area of North East especially in Jafarabad and Okhla in public schools/govt. schools (2011):

<http://www.delhi.gov.in/wps/wcm/connect/d2e288004946bfdea3fefb6e7ab98a3b/survey.pdf?MOD=AJPERES&lmod=-673768925&CACHEID=d2e288004946bfdea3fefb6e7ab98a3b>

Directory of Welfare for minorities in the NCT of Delhi

Vol 1:

<http://www.delhi.gov.in/wps/wcm/connect/aa3d16804946cf2aa49aff6e7ab98a3b/3.pdf?MOD=AJPERES&lmod=-673739210&CACHEID=aa3d16804946cf2aa49aff6e7ab98a3b>

Vol 2:

<http://www.delhi.gov.in/wps/wcm/connect/52b383804946ce22a490ff6e7ab98a3b/2.pdf?MOD=AJPERES&lmod=-673751756&CACHEID=52b383804946ce22a490ff6e7ab98a3b>

Status & Problems of Christian Cemeteries in Delhi

It is a full-fledged study based on ground research about the current condition of Christian burial grounds in the NCT of Delhi. The study finds that there are 13 Christian burial grounds in Delhi out of which seven are open or functional at present for fresh burials. It shows that there is an acute shortage of burial space for the Christians of Delhi. Seven areas of Christian concentration in Delhi do not have any cemeteries. The study also covers burial practices in some other countries and offers a number of suggestions to solve the acute land problem faced by the existing burial grounds. Suggestions include installation of cell-like structures inside cemeteries, underground construction of graves, vertical burial and opening of some cemeteries which are closed now and use of new eco-friendly techniques including re-burial in old graves. This study will be published by DMC soon.

DMC ANNUAL REPORTS

Annual Report 2008-09, Annual Report 2009-10, Annual Report 2010-11, Annual Report 2011-12, Annual Report 2012-13, Annual Report 2013-14, Annual Report 2014-15, Annual Report 2015-2016, Annual Report 2016-2017:

http://www.delhi.gov.in/wps/wcm/connect/doi_t_dmc/DMC/Home/Annual+Report